

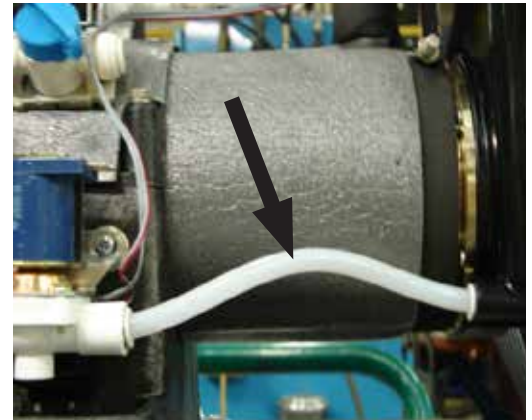
Topic

A bow in the drain line between the water reservoir and purge valve prevents the Horizon icemaker from sensing a low-water condition; thus preventing the machine from exiting purge mode.

Action

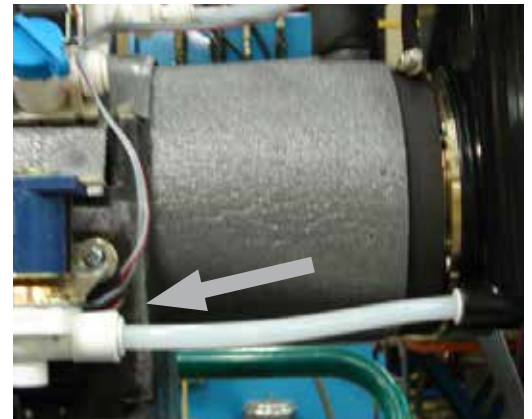
1. Locate bow in drain line (**Fig. 1**).

Fig. 1



2. Rotate and adjust drain line* so that it is sloped towards the purge valve (**Fig. 2**).

Fig. 2



- * Proper drain line lengths:
- Horizon 1000 lb: 8 in.
 - Horizon 1400 lb: 10 in.
 - Horizon 1650 lb: 10 in.

Horizon is a trademark of Follett Corporation.
Follett is a registered trademark of Follett Corporation, registered in the US.