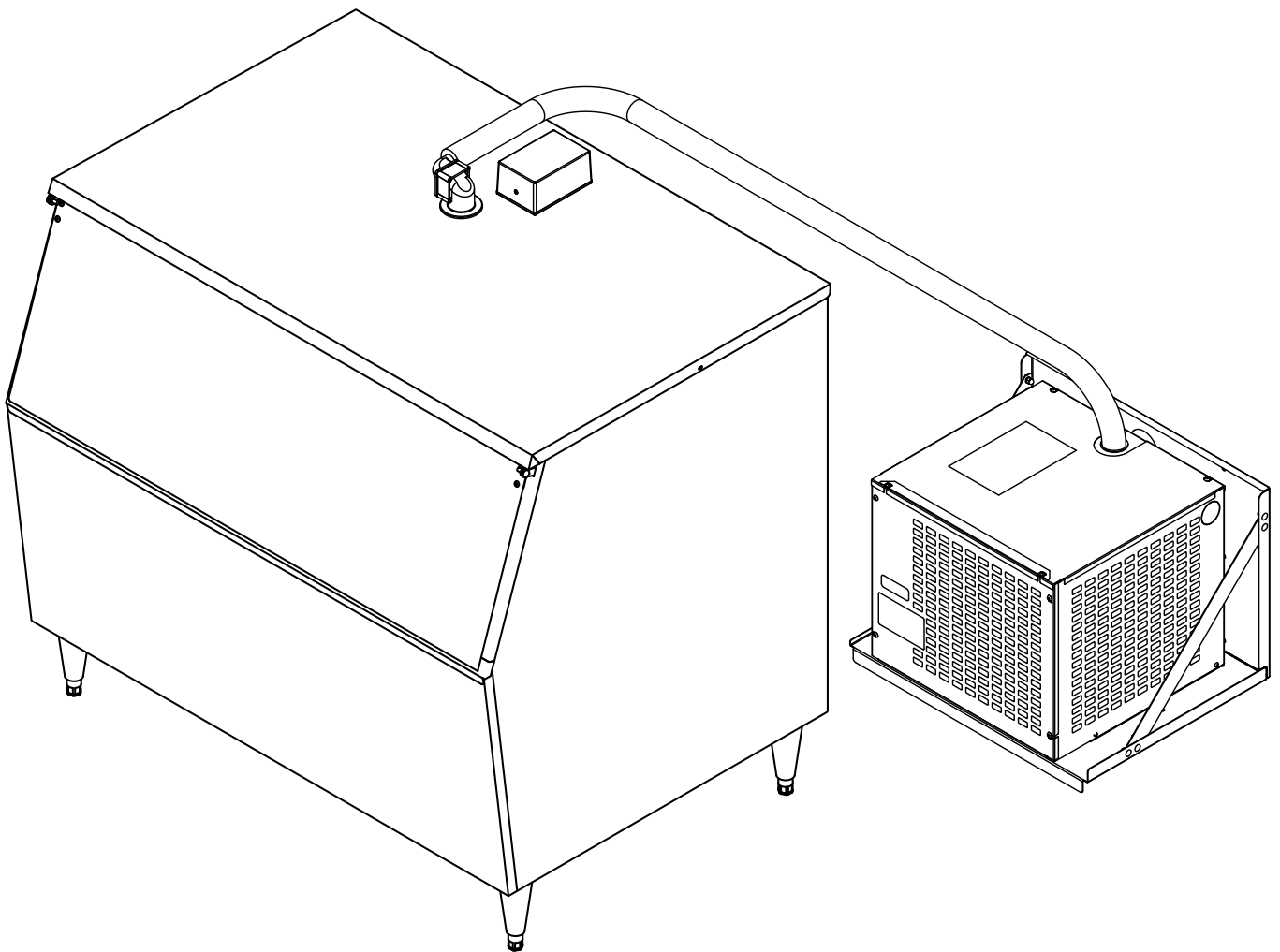
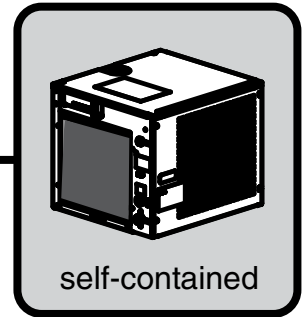


Maestro Plus™ Ice Machine with RIDE™ Technology Installation Instructions for Ice Storage Bin

D414AS, E414AS

Order parts online
www.follettice.com





1.1.1 Caution: Risk of fire.

1.1.2 Warning: Keep ventilaton openings clear of obstruction.

1.1.3 Warning: Do not damage the refrigerant circuit.

1.1.4 Warning: Connect to potable water supply only.



CAUTION!

- Do not tilt unit further than 30° off vertical during uncrating or installation.
- Dispenser bin area contains mechanical, moving parts. Keep hands and arms clear of this area at all times. If access to this area is required, power to unit must be disconnected first.
- This appliance is not suitable for installation in an area where a water jet could be used.
- This appliance must not be cleaned by a water jet.
- User maintenance should not be done by children.
- Follett recommends a Follett water filter system be installed in the ice machine inlet water line (standard capacity, high capacity, carbonless high capacity).
- Prior to operation clean the dispenser in accordance with instructions found in this manual.
- Do not block air intake or exhaust.
- This appliance should be permanently connected by a qualified person in accordance with application codes.
- A qualified person shall provide a readily accessible disconnect device incorporated into the fixed wiring.
- If the supply cord is damaged, it must be replaced by the manufacturer, its service agent or similarly qualified persons in order to avoid a hazard.
- This appliance can be used by children aged 8 years and above and persons with reduced physical, sensory, or mental capabilities, or lack of experience and knowledge if they have been given supervision or instruction concerning use of the appliance in a safe way and understand the hazards involved. Children should be supervised to ensure that they do not play with the appliance.
- This appliance is designed for commercial use.
- **WARNING!** To avoid a hazard due to instability of the appliance, it must be fixed in accordance with the instructions.
- Warranty does not cover exterior or outside installations.
- To reduce risk of shock, disconnect power before servicing.
- Connect to potable water supply only.
- Ice is slippery. Maintain counters and floors around dispenser in a clean and ice-free condition.
- Ice is food. Follow recommended cleaning instructions to maintain cleanliness of delivered ice.

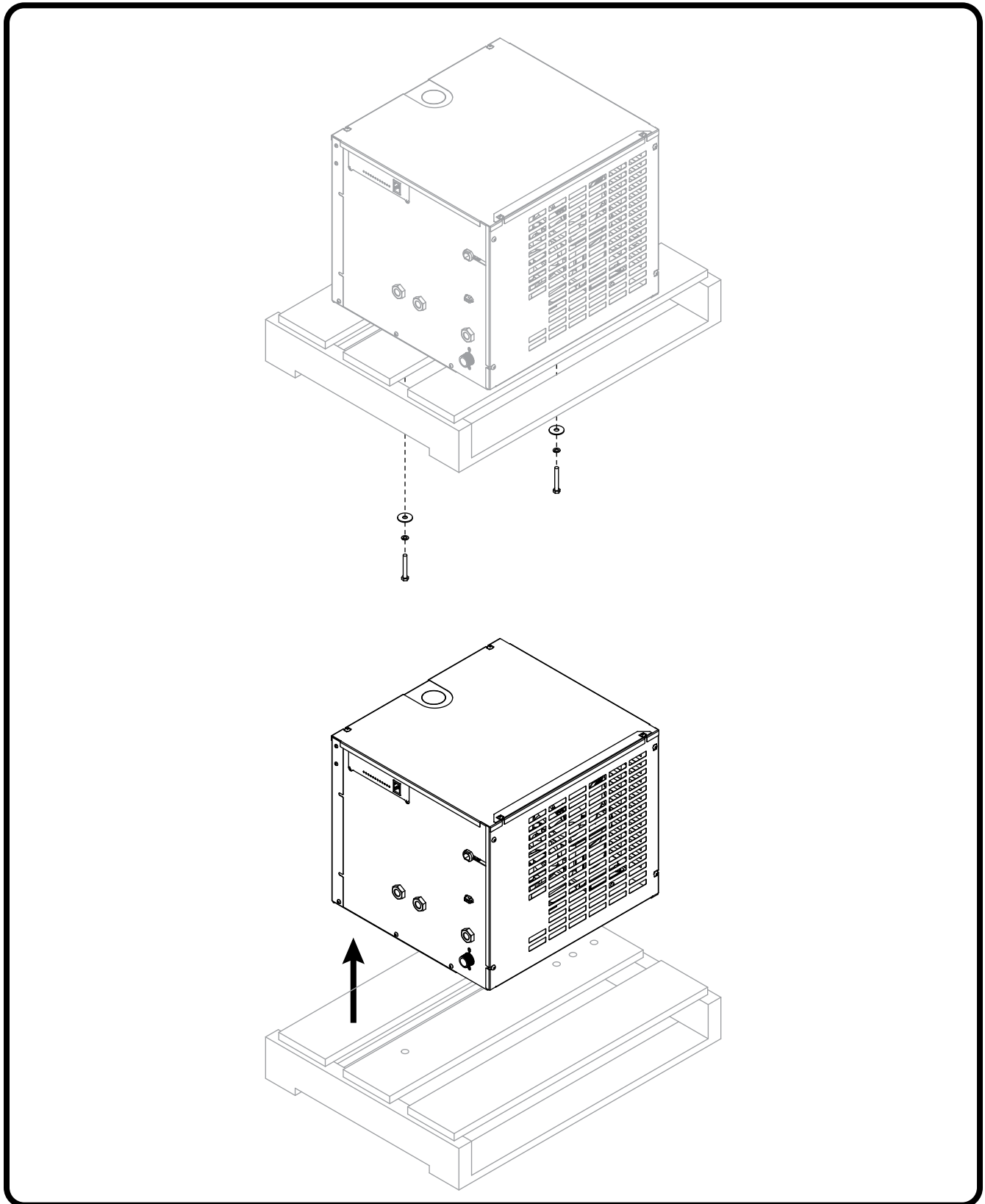
Contents

Unpack	4
Unpack Ice Machine	4
Site Preparation	5
Installation site requirements	5
Bin Top Preparation	6
Mount thermostat box	6
Install shuttle actuator and bracket	6
Route thermostat	6
Mount Ice Machine	7
External Connections	7
Air-cooled ice machines only	7
Water-cooled ice machines only	7
Bin thermostat cable	8
Transport tube installation	9
General requirements	9
Procedure	9
RIDE model ice machine start up procedure	10
Before turning on power	10
After turning on power	10

1. Unpack

Carefully unpack and inspect the contents of your Follett ice machine.

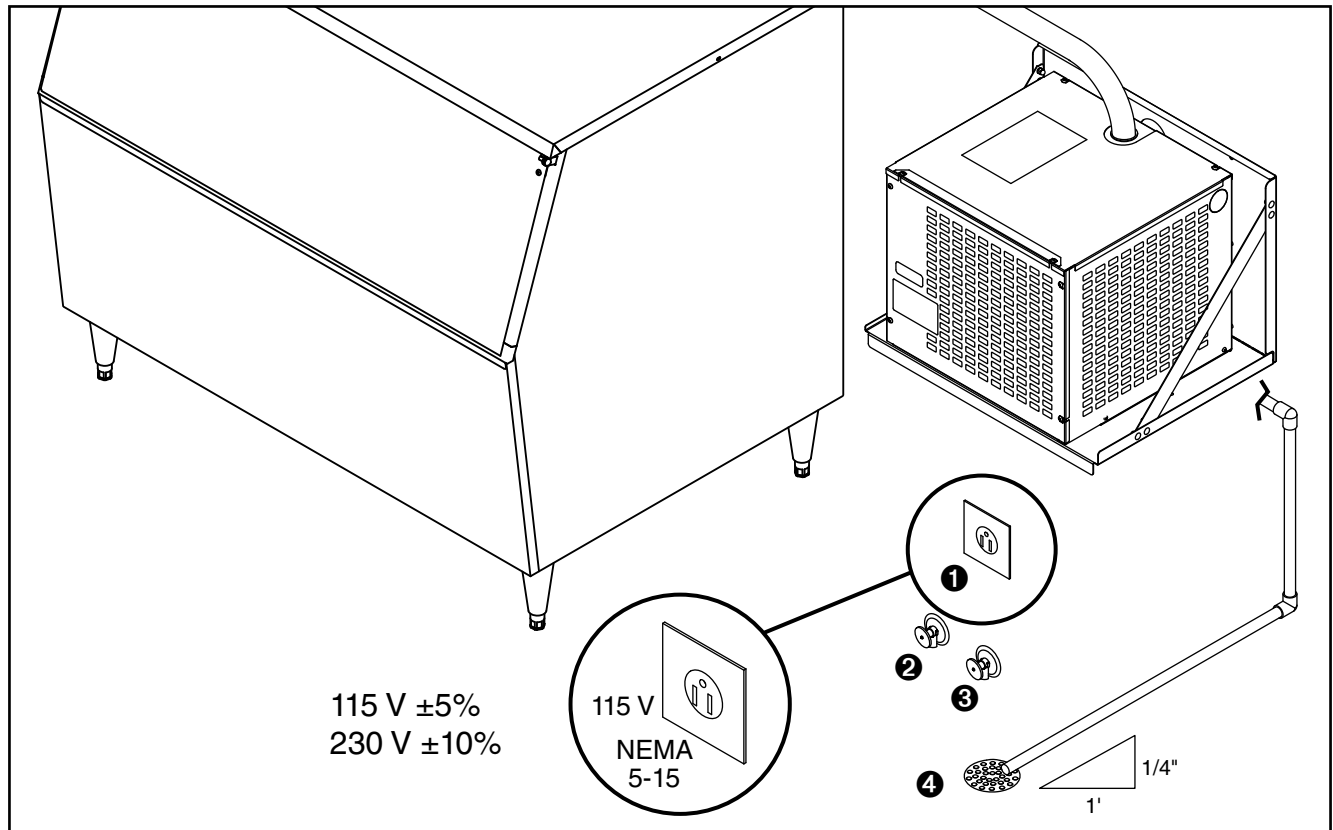
1.1 Unpack Ice Machine



2. Site Preparation

Provide drainage, potable water supply and electrical power to within 6 feet (2m) of ice machine in accordance with local and national codes. Outdoor installation is not recommended and will void warranty.

2.1 Installation site requirements



Electrical ❶



WARNING!

- This appliance should be connected by a qualified person in accordance with application codes.
- If the supply cord is damaged, it must be replaced by the manufacturer, its service agent or similarly qualified persons in order to avoid a hazard.

D414AR 115/60/1 (115 V \pm 10%) 15A breaker
(Requires a 15A dedicated circuit)

E414AR (230/50/1 - 5.5A (full load)
(Requires a dedicated circuit, 1.50 mm² wire)

Potable Water Supply ❷

10 psi to 70 psi (69 kpa to 483kpa)

45 F to 90 F (7 C to 32 C)

Condenser water supply for water-cooled systems ❸

10 psi min.; 125 psi max. (69 kpa min.; 862 kpa max.)

20 F to 90 F (-7 C to 32 C)

0.5 gallons (1.9 liters) per minute

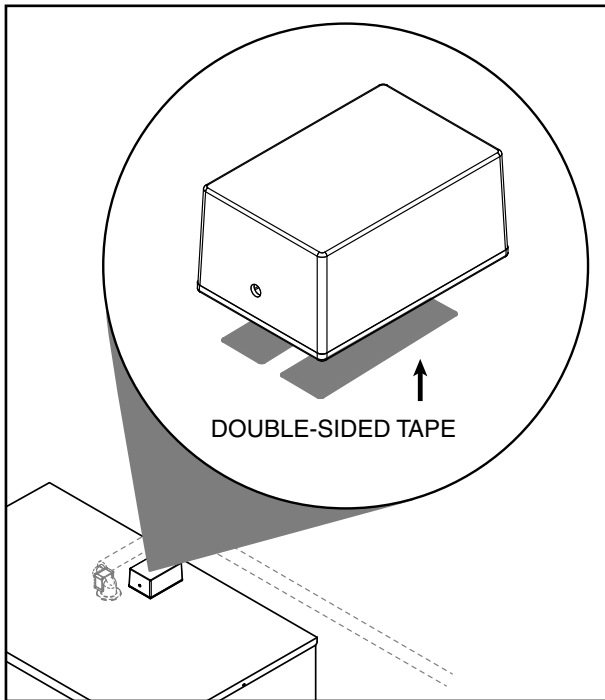
Drain ❹

The drain line from the ice machine must have at least 1/4 in. per foot (6,4 mm/0,3 m) pitch

3. Bin Top Preparation

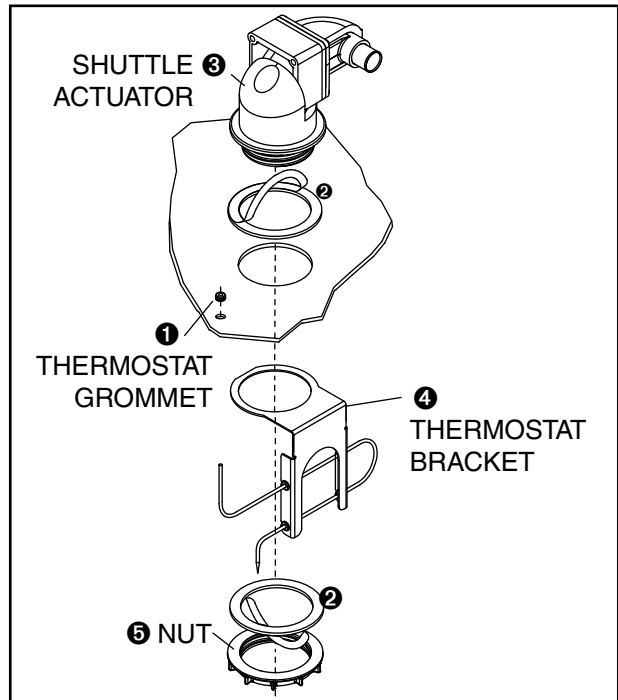
3.1 Top Preparation - Thermostat (if applicable)

3.1.1 Mount thermostat box



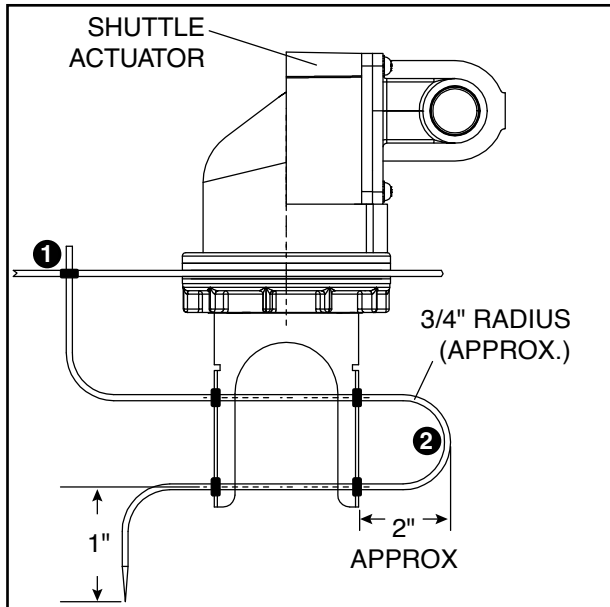
- Apply double-sided tape to bottom of thermostat box and mount box on bin.

3.1.2 Install shuttle actuator and bracket



- Install thermostat grommet ①.
- Remove protective tape and apply gaskets ② to shuttle actuator and nut.
- Place shuttle actuator in hole ③.
- Install thermostat bracket ④ and nut ⑤. Ensure that nut captures the thermostat bracket, then hand tighten.

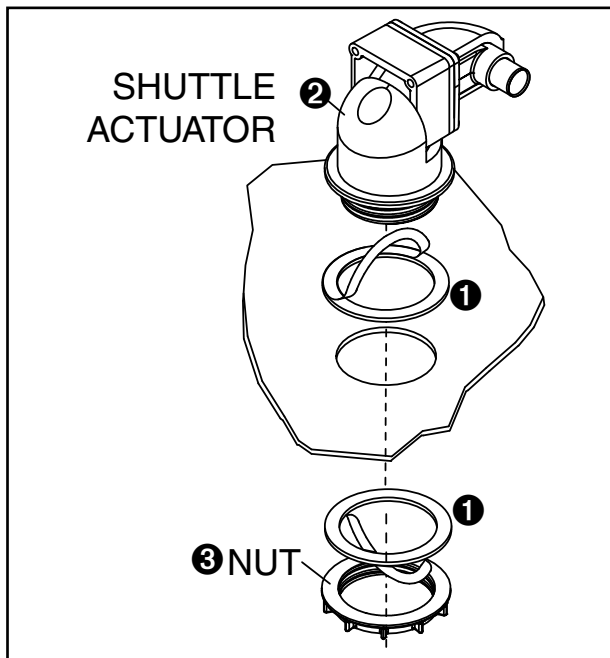
3.1.3 Route thermostat



- Route thermostat through grommet and into bin ①.
- Secure thermostat in bracket ②.

3.2 Top Preparation - Shuttle Actuator (if applicable)

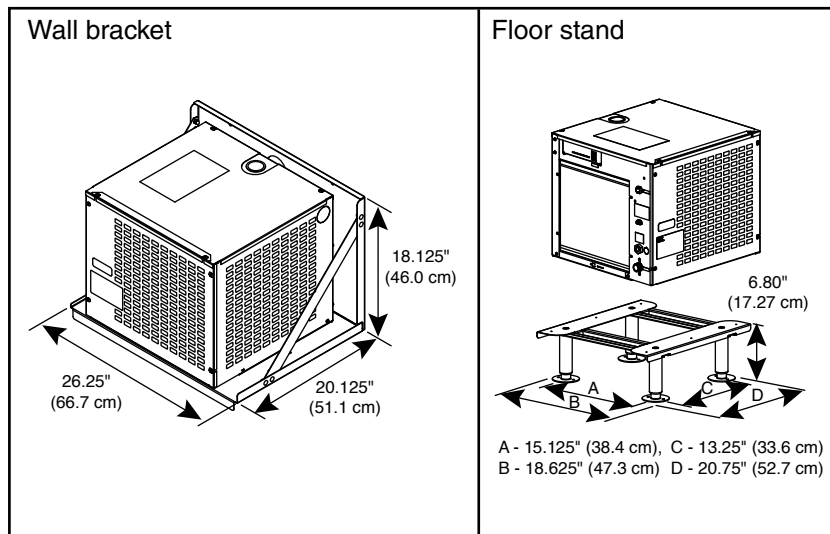
3.2.1 Install shuttle actuator



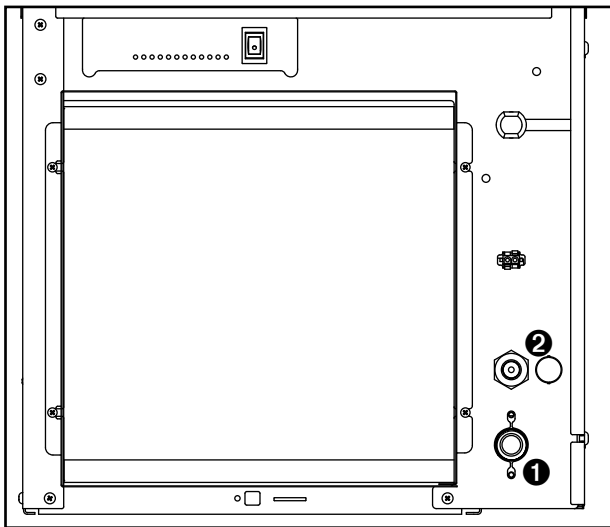
- Remove protective tape and apply gaskets ① to shuttle actuator and nut.
- Place shuttle actuator in hole ②.
- Install nut ③ and hand tighten.

4. Mount Ice Machine

Mounting options: Wall bracket or Floor stand



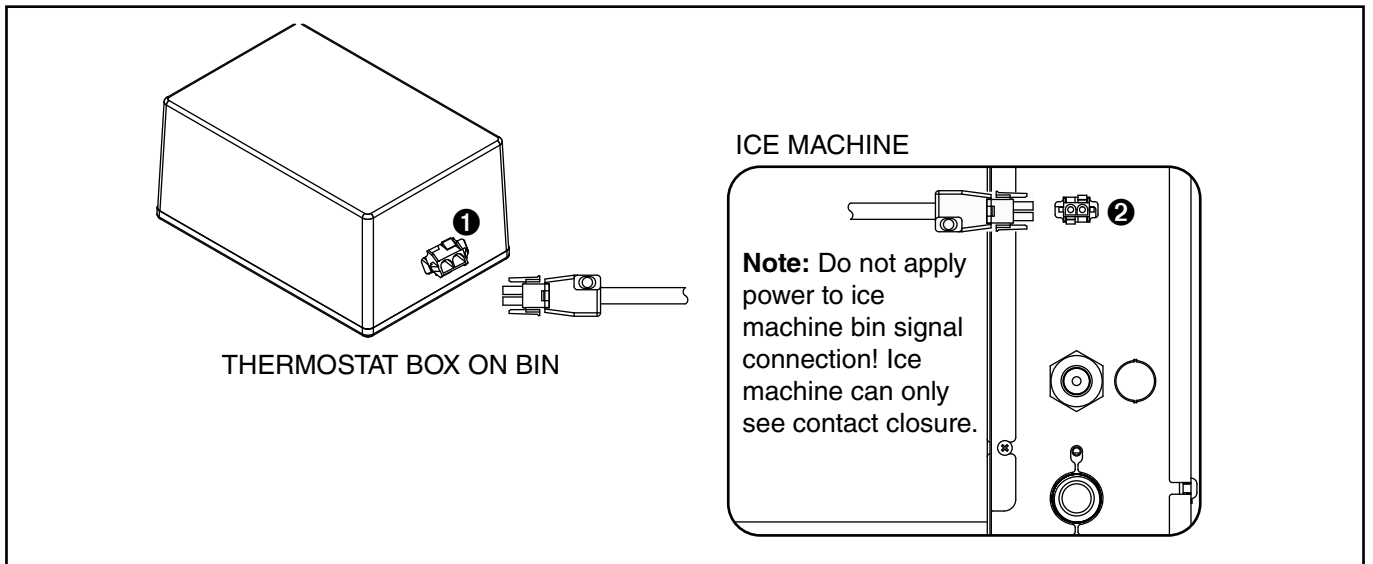
5. External Connections



- Install drain line **1** (3/4" MPT).
The rigid drain line from the ice machine must have at least 1/4" per foot (6,4 mm/0,3 m) pitch.
- Install ice machine potable water supply **2** (3/8" FPT).

Note: Follett recommends a Follett water filter system be installed in the ice machine inlet water line (standard capacity, high capacity, carbonless high capacity).

5.1 Bin thermostat cable (if applicable)



- Connect 2-pin bin thermostat cable at thermostat box on bin and at front of ice machine.

6. Transport tube installation

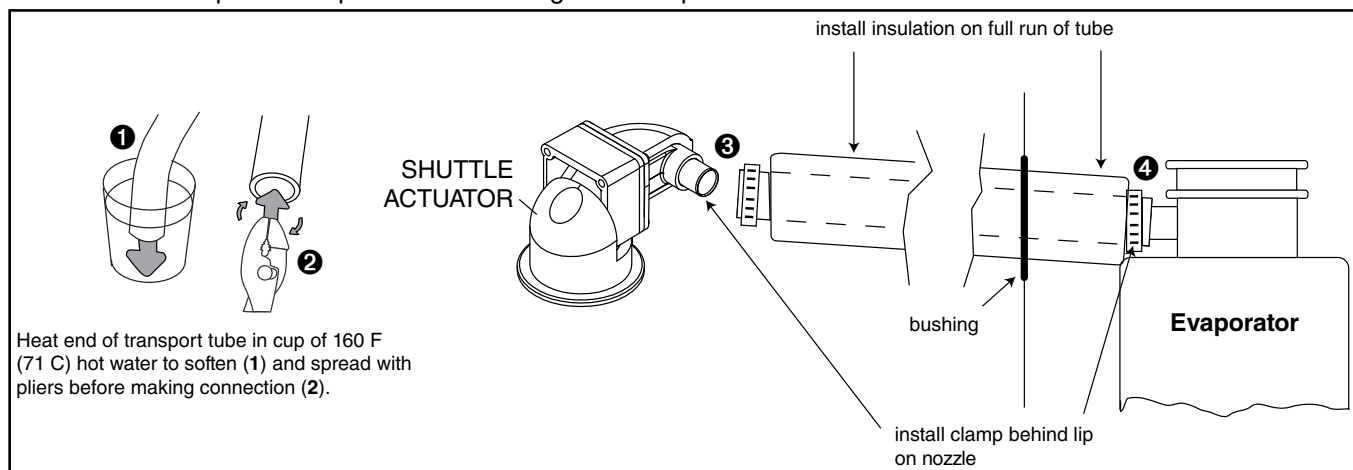
Incorrect ice transport tube installation can result in wet ice and dispensing problems. Follow guidelines below to ensure correct installation. Call factory for assistance if you are unable to meet these requirements.

6.1 General requirements

- Maximum length of tube run – 20 ft (6 m). Factory approval required for longer runs.
- Run tube without dips.
- One continuous length of tube; no splices.
- Minimum radius of bends in tube – 6" (15.3 cm) inside radius.
- Maximum number of bends – 6.
- Insulation on entire run of ice tube.

6.2 Procedure

1. Install supplied insulation on entire length of tube.
2. At shuttle actuator, pull insulation back from transport tube and slip supplied hose clamp over end of transport tube.
3. Heat end of transport tube in cup of 160 F (71 C) hot water to soften ❶ and spread with pliers ❷ before making connection to ease assembly.
4. Push transport tube onto shuttle actuator nozzle ❸.
5. Position clamp behind lip on shuttle actuator nozzle and tighten clamp.
6. Run insulated tube without dips between shuttle actuator on bin and ice machine and secure in place.
7. Remove ice machine top panel.
8. Select side, rear or top knockout in ice machine cabinet for tube entrance and install bushing.
9. Slide end of transport tube and insulation through bushing in ice machine and run to nozzle.
10. Cut tube to that length.
11. Pull insulation back and slip supplied hose clamp over end of transport tube.
12. Heat end of transport tube in cup of 160 F (71 C) hot water to soften ❶ and spread with pliers ❷ before making connection to ease assembly.
13. Push transport tube onto nozzle ❹.
14. Position clamp behind lip on nozzle and tighten clamp.



7. RIDE model ice machine start up procedure

The start-up procedure below is intended to ensure that ice machine is operating properly after installation has been made. Check each item listed and call factory immediately for assistance if you experience problems with unit.

NOTICE!

- Ice machine **MUST** be sanitized prior to operation!
- Consult Operation and Service Manual provided with ice machine for sanitizing instructions.

7.1 Before turning on power

1. Turn on water to ice machine.
2. Check that hose clamp securely holds ice transport tube on nozzle.

7.2 After turning on power

1. Turn on power to ice machine and confirm that gearmotor, fan motor and compressor start immediately.
2. Check that ice begins to enter bin area within approximately 10 minutes.
3. **Thermostat:** put ice against bin level thermostat in bin and check that compressor and gear motor shut down immediately after thermostat opens. Fan will continue to run for an additional 10 minutes
Shuttle actuator: block ice coming into bin at acuator and check that compressor and gear motor shut down. Fan will continue to run for an additional 10 minutes.
4. Check that ice machine comes back on in approximately 20 minutes (bin signal must be present).

Maestro Plus is a trademark of Follett Products, LLC.

Follett, Chewblet and RIDE are registered trademarks of Follett Products, LLC, registered in the US.

FOLLETT[®] 801 Church Lane • Easton, PA 18040, USA
Toll free (877) 612-5086 • +1 (610) 252-7301
www.follettice.com

01571306R00
© Follett Products, LLC 11/24