



# Single door Ice•Devlce™

ice storage, dispensing and transport system

## Features

### Two capacities to meet varied needs

- space-saving 76.2 cm (30.00") width – 209 kg (460 lb) or 308 kg (680 lb) storage capacity

### Designed with speed, safety and sanitation in mind

- elevated ice storage bin uses gravity to dispense ice through a chute seven times faster than scooping
- dispensing directly into cart eliminates scooping by hand to help prevent cross-contamination
- industry exclusive SmartGATE® ice shield controls the flow of ice to reduce spill and limit contact with ice
- locks in three positions and returns easily to full down position

### Fresher ice

- first ice in is first ice out

### Ice compatibility

- compatible with most non-flake ice types, including customer preferred Chewblet® ice

### Durable, user-friendly construction

- full stainless bin exterior and base
- corrosion-resistant poly bin liner
- heavy duty "stay-open" PowerHinge™ door hinge – easy one hand open and close without door catches

### SmartCART™ 75 ice cart fits through narrow aisles

- slim, 54.7 cm (21.50") wide cart safely moves 34 kg (75 lb) of ice in three Totes ice carriers
- oversized back wheels for easy maneuverability

### Easy installation

- comes with ice access door assembly attached to body of bin
- only 78.7 cm (31.00") wide to fit through standard door openings by removing front door assembly (4 screws, no sealant)

### Includes:

- custom-cut stainless top
- one SmartCART 75 ice transport cart with three removable Totes ice carriers
- 82 oz plastic ice scoop
- paddle and rake tool set with hanging bracket

### Accessories

Additional carts and accessories (refer to form# 3435)

Gravity ice dispense eliminates scooping



Job

Item

Follett Europe Polska Sp. z o.o.  
Mokry Dwór 26C 83-021 Wiślnia, Poland  
+48 (58) 785-6140 | Fax: +48 (58) 785-6159  
folletteurope.com

801 Church Lane | Easton, PA 18040, USA  
1.610.252.7301 | Fax: +1.610.250.0696 | follettice.com

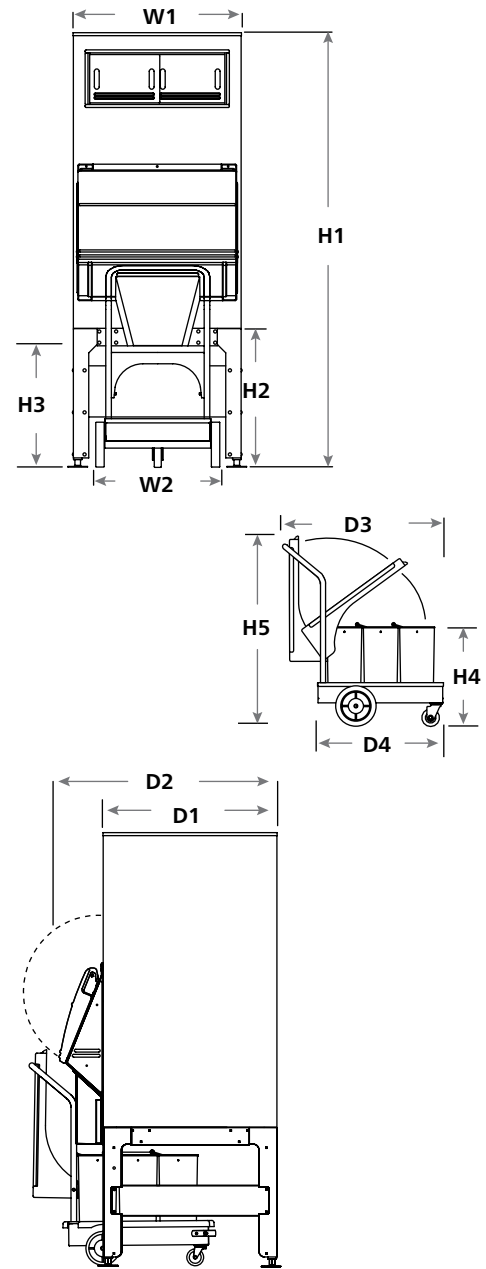
**FOLLETT®**

## Specification

Maximum bin capacity <sup>1</sup>	see model table below
<b>W1</b> Bin width	76.2 cm (30.00")
<b>D1</b> Bin depth	78.7 cm (31.00")
<b>D2</b> Bin depth with lower door assembly <sup>2</sup>	99.1 cm (39.00")
<b>H1</b> Bin height <sup>3</sup> (adjustable)	see model table below
<b>H2</b> Bin base height <sup>4</sup> (adjustable)	62.9 cm (24.75")
<b>H3</b> Bin base clearance <sup>5</sup> (adjustable)	54.9 cm (21.62")
Required door access <sup>5</sup>	78.7 cm (31.00")
<b>W2</b> Cart width	54.6 cm (21.50")
<b>D3</b> Cart depth	86.4 cm (34.00")
<b>H4</b> Cart height at front edge	52.1 cm (20.50")
<b>H5</b> Cart height with lid up	98.1 cm (38.62")
Drain <sup>6</sup>	1.00" FPT, center of bin bottom (drain elbow supplied)
Dispense rate	up to 2.3 kg (5 lb) per second
Ice compatibility	cube ice and Chewblet ice
Approximate ship weight	see model table below
NOTE: For indoor use only	

SHORT FORM SPECIFICATION: Ice•Device system to be Follett model \_\_\_\_\_ elevated bin, base, and ice transport cart system with front ice chute and industry-exclusive SmartGATE ice shield. Bin to hold approximately \_\_\_\_\_ kg (lb) of ice. Exterior finish of bin and base to be full stainless front, sides, back and bottom. Bin liner to have non-corroding polyethylene walls and stainless steel bottom. Bin top to be custom-cut for ice machine(s) to be used. Lower door assembly to include non-corroding poly access door, poly lift door with PowerHinge to eliminate gasket and latches, and inner SmartGATE to positively control ice flow into access door area. Entire lower door assembly to be easily removable for installation through narrow doors. Upper inspection window (E-DEV700SG-30 only) to be double-wall poly to increase durability and minimize ice melt and condensation. Cart base to be rotomolded polyethylene with hinged plastic lid and drain. Totes to be of one-piece, molded poly with swivel handle. Cart and Totes to store below bin when not in use. All models to be equipped with flanged, adjustable feet, paddle and rake tool set. NSF listed.

## Dimensional drawing



ICE•DEVICE, POWERHINGE, SMARTCART and TOTES are trademarks of Follett LLC. CHEWBLET, FOLLETT and SMARTGATE are registered trademarks of Follett LLC, registered in the US. Follett reserves the right to change specifications at any time without obligation. Certifications may vary depending on country of origin.

Model	Maximum bin capacity <sup>1</sup> kg (lb)	Cubic volume m (cu ft)	Width cm (in)	Depth cm (in)	Height - <b>H1</b> cm (in)	Approximate ship weight kg (lb)
E-DEV500SG-30-75 <sup>7</sup>	20.9 (460)	0.41 (14.8)	76.2 (30.00)	78.7 (31.00)	157.5 (62.00)	136 (299)
E-DEV700SG-30-75	30.8 (680)	0.61 (21.7)	76.2 (30.00)	78.7 (31.00)	196.9 (77.50)	146 (321)

### Notes:

- <sup>1</sup> Computed on cubic volume of bin. Does not reflect cart capacity or voids that can occur due to pyramiding.
- <sup>2</sup> Lower door assembly easily removed for installation access.
- <sup>3</sup> Special top required for ice machines weighing more than 454 kg (1000 lb). Add 1.27 cm (0.5") to height. Contact factory.
- <sup>4</sup> 25.4 cm (10.00") flanged legs available which replace base unit, height from floor to bottom of chute equals 39.4 cm (15.50"), overall height reduced by 37.4 cm (14.75"). Includes one Totes ice carrier instead of cart and uses 10.16 cm (4.00") chute.
- <sup>5</sup> Required clearance for installation access through doors (may require removal of door assembly).
- <sup>6</sup> Follett recommends installation of a floor drain with grate with all ice storage bins. Consider cart positioning when locating the drain. Clearance required to pull cart from below bin - minimum 66.1 cm (26.00"), optimal 101.6 cm (40.00").
- <sup>7</sup> DEV500SG-30 does not have upper inspection window.

## E-DEV Series

