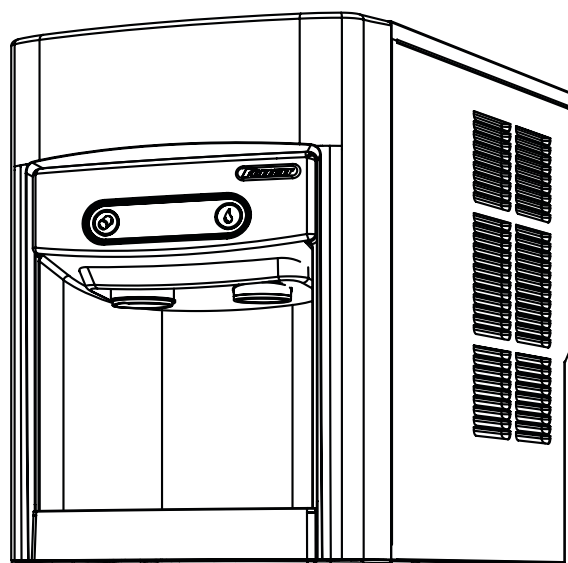


E7CI100A



E15CI100A

**Following installation, please forward this manual
to the appropriate operations person.**

Contents

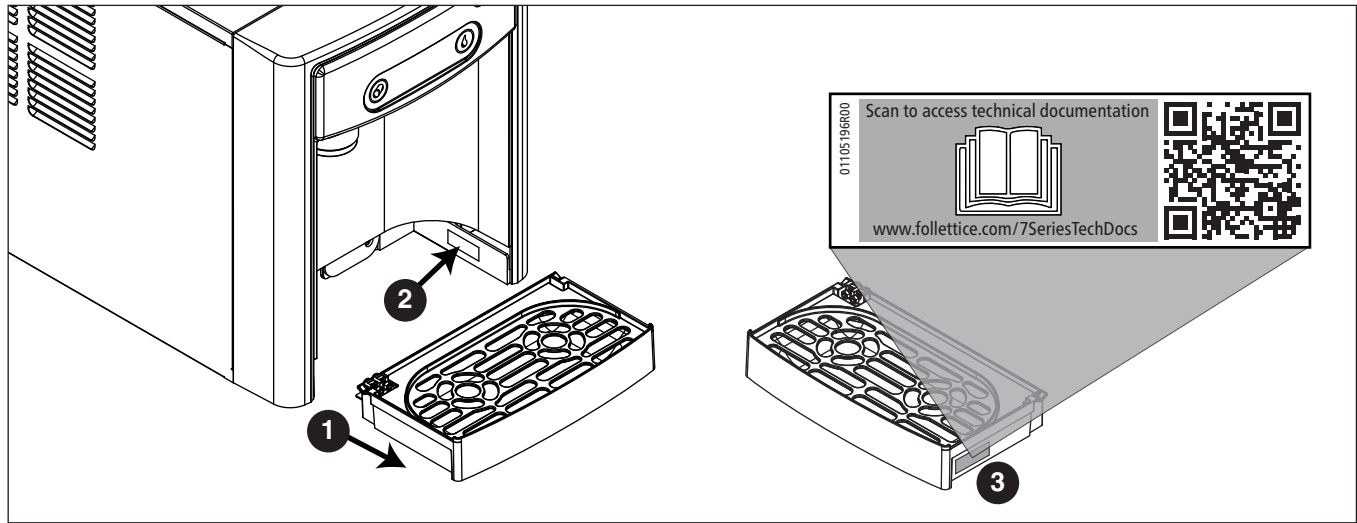
Welcome	3
Before You Begin	3
Important Safety Information	4
Specifications	4
Dimensions	4
Ambient Information	4
Plumbing	4
Specifications	5
Water	5
Clearances	5
Electrical	5
Refrigeration	5
Heat Rejection	5
E7 Series Detailed Drawing	6
E15 Series Detailed Drawing	6
Installation	7
Countertop Installation	7
Maintenance/Cleaning Mode	9
Accessing Internal Components	9
Cleaning and Sanitizing Procedure	10
Service	12
LED Indicator Description	12
Evaporator Disassembly	13
Evaporator Assembly	16
Water Feed Schematic	20
Storage Bin Melt Water/Evaporator Feed/Clean Out System Schematic	20
Vent System Schematic	21
Refrigeration Schematic	22
Condenser Fan Motor Removal (E7 Series Shown)	23
User Interface Display Identification	24
Electrical Wiring Diagram	25
Parts	26
E7 Series Exterior	26
E7 Series Interior	28
E15 Series Exterior	30
E15 Series Interior	32
E7 Series Bin Assembly	34
E15 Series Storage Bin Assembly	36
Evaporator Assembly	38

Welcome

Follett equipment enjoys a well-deserved reputation for excellent performance, long-term reliability, and outstanding after-the-sale support. To ensure that this product delivers that same degree of service, we ask that you take a moment to review this manual before beginning the installation. Should you have any questions or require technical help at any point, please call our technical service group at (877) 612-5086 or +1 (610) 252-7301.

Before You Begin

After uncrating and removing all packing material, inspect the equipment for concealed shipping damage. If damage is found, immediately notify the shipper and contact Follett Corporation so that we can help in the filing of a claim, if necessary. If needed, the serial number of your dispenser can be found by removing the drip tray **1** and locating the serial number label **2**. A QR Code is located on the right hand side of the drip tray **3**. This code allows you to access manuals, technical bulletins, and on-line training related to the 7 Series and 15 Series dispensers.



Check your paperwork to verify that you received the correct dispenser. Follett configuration numbers are designed to provide information about the type of dispenser you are receiving. The following is an explanation of the different model numbers.

E	7	CI	100	A
Electrical	Dispenser Storage Capacity	Configuration	Ice Machine Capacity	Condenser Type
E 230 V/50 Hz	7 7 lb (3.1 kg) 15 15 lb (6.8 kg)	CI Countertop	100 lb (45.3 kg) per day	A Air-cooled

Important Safety Information

Please read and adhere to the following safety information while installing, using, or servicing your Follett Ice Dispenser.

1. Always disconnect power before servicing the dispenser.
2. Ice is slippery. Maintain counters and floors around dispenser in a clean and ice-free condition.
3. Ice is food. Follow the recommended cleaning and sanitizing instructions to maintain cleanliness of delivered ice.
4. The appliance is not intended for use by persons including children with reduced physical, sensory or mental capabilities, or lack of experience and knowledge, unless they have been given supervised or instruction concerning use of the appliance by a responsible person for their safety. Children should be supervised to ensure that they do not play with the appliance.
5. The appliance is only to be installed in locations where its use and maintenance is restricted to trained personnel.
6. The appliance is not suitable for installation in an area where a water jet could be used.

Specifications

Dimensions

	E7CI100A	E15CI100A
Width	40 cm (14.50")	40 cm (14.50")
Depth	56.2 cm (22.12")	59.7 cm (23.50")
Height	44.5 cm (17.50")	57.2 cm (22.50")
Unit Shipping Weight	41 kg (90 lb)	45.4 kg (100 lb)

Ambient Information



CAUTION!

The E7CI100A, E7FS100A and E15CI100A, E15FS100A are for indoor use only. Designed for commercial use. Follett is not able to provide in-house services for residential installations.

	Maximum*	Minimum*
Air Temperature†	38 C (100 F)	10 C (50 F)
Water Temperature	32.2 C (90 F)	4.5 C (40 F)
Water Pressure	483 kpa (70 psi)	69 kpa (10 psi)
Relative Humidity	55% at 25.5 C (78 F)	

* Use outside of these limitations is misuse and will void warranty.

† Best performance is achieved between 27 C (80 F) and 10 C (50 F).

Plumbing

- Water Inlet: 1/4" MPT
- 1/2" bin drain line must slope 1/4" per foot (6 mm per 30,4 cm run).
- Optional Drain Accessory Kit (item# 00956375 or 00981977): 1/2" ID tubing
- Water shut-off recommended within 1.5 m (5 ft.) of dispenser

Specifications

Water



WARNING!

- *Connect to potable water supply only.*
- The discharge drain must be installed via a type AA, AB, or AD air gap or in accordance with requirements of EN1717..
- Water Mineral Content:
 - TDS: greater than 5 ppm (mg/l) but less than 400 ppm (mg/l)
 - Hardness: Less than 200 mg/l (12 gpg)
- Not recommended for use with softened water
- Ingress Protection (IP) rating: IPX0 (no protection)

Clearances

- 7.62 cm (3") behind and on each side of dispenser for electrical connection and ventilation

Electrical

- **E Series:** 230 V, 50 Hz, 1 phase, 5A, maximum fuse 10A
- Connect to dedicated 10A circuit, fuse or breaker.
- Must be grounded - requires 3-prong outlet. Do not remove ground.
- Replacement cord instructions, type IEC 60320-C13 attachment - If the supply cord is damaged, it must be replaced by a special cord or assembly available from the manufacturer or its service agent.

Refrigeration



WARNING!

Do not damage the refrigerant circuit. Refrigerant can cause personal injury and/or damage dispenser.

- Refrigerant R134a – 204 grams (7.2 ounces)

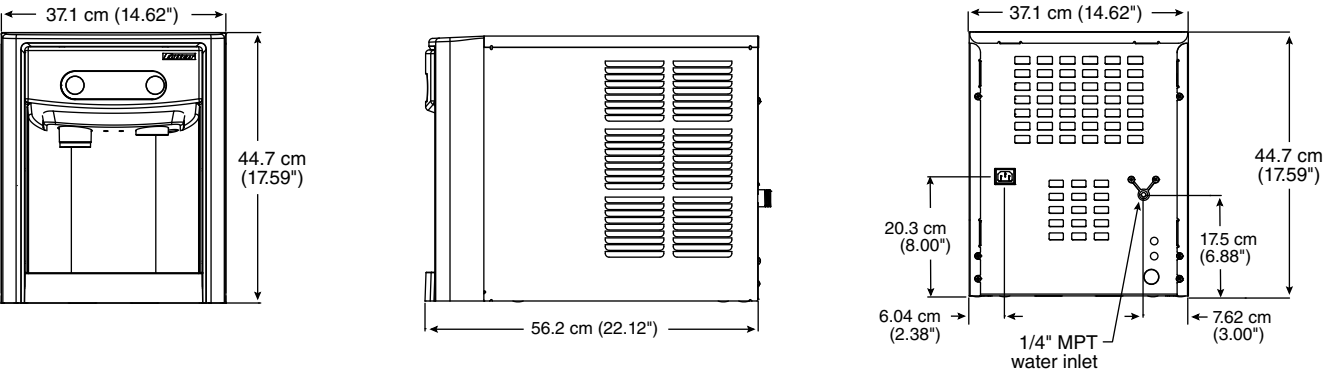
Heat Rejection

- 498 W (1700 BTU/hr)

Specifications (continued)

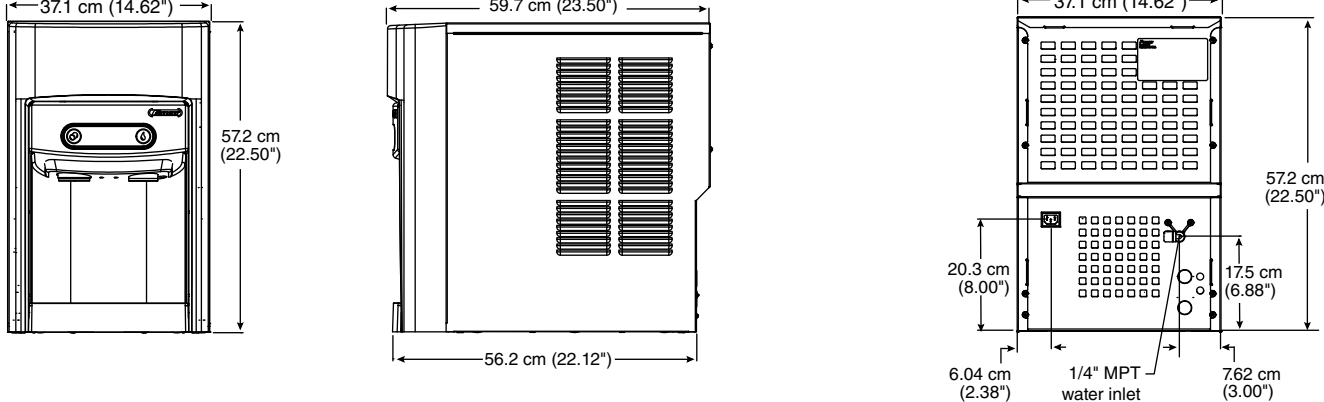
E7 Series Detailed Drawing

Countertop models



E15 Series Detailed Drawing

Countertop models



Installation



CAUTION!

No service or maintenance should be performed until the technician has thoroughly read this service manual. Except for routine cleaning and sanitizing, only qualified technicians should attempt to service or maintain this equipment.

Countertop Installation

The E7 Series countertop model is designed to fit on counters underneath standard mounted cabinets, this does not apply to E15 Series models. See [page 4](#) for dimensions. Installation instructions for freestanding model may be found on [page 9](#).

1. A clearance of at least 7.62 cm (3") is required behind and on each side of the dispenser for electrical connection and ventilation (**Fig. 1**).
2. Rough-in the electrical service and water line.
 - Electrical: 230V, single phase. The dispenser is provided with a 2.4 m (8 ft.) power cord with choice of CEE 7/7, AS 3112, or BS 1363 plug.
 - Water: supply line (with shut-off valve) connects to the dispenser's 1/4" MPT inlet.

NOTICE!

If installing optional Drip Tray Drain Kit or Leg Accessory, complete those steps before proceeding. Refer to instructions included with the Drip Tray Drain Kit, or see [page 8](#) for Leg Accessory instructions.

3. Connect water line (**Fig. 2.1**).
4. Connect to the 1/2" ID drain line (**Fig. 2.2**) (barb fitting provided) and route to customer drain. Drain line must slope 6 mm per 30,4 mm run (1/4" per foot).
5. Connect power supply.
6. Sanitize the dispenser prior to use (see Page 10).

Fig. 1

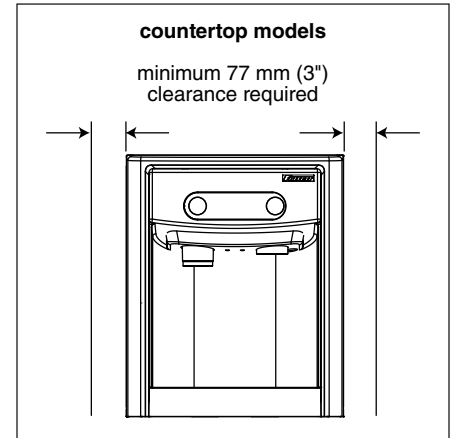
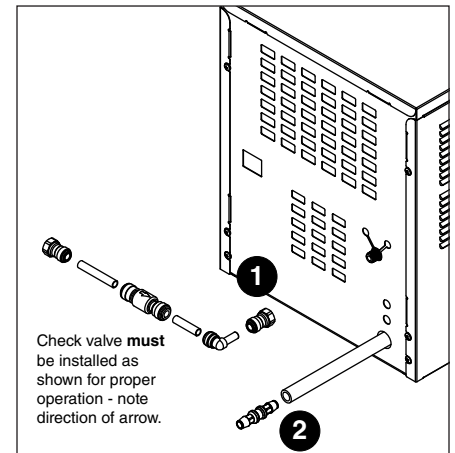


Fig. 2



Installation (continued)

Optional Leg Accessory Installation

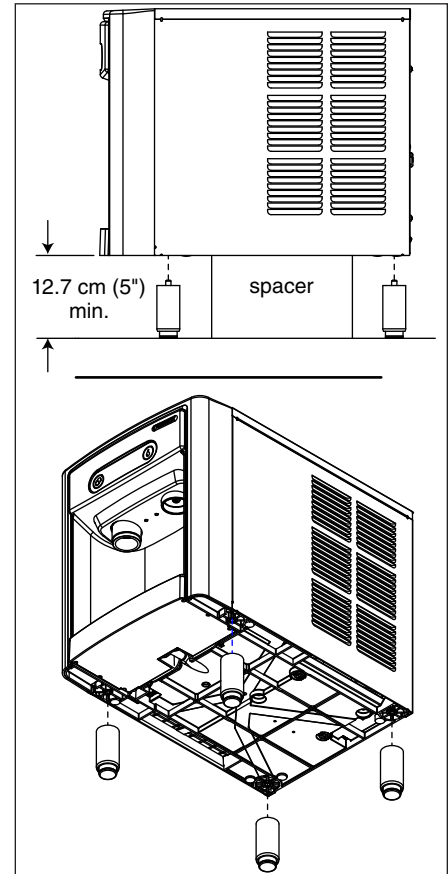


CAUTION!

Use caution when tipping the dispenser during leg installation. Do not lay unit on back or side. **DO NOT EXCEED 30° angle.** Tipping more than 30° can result in compressor malfunction.

1. If installing optional 4" Leg Accessory (item# 00956300), place a 12.7 cm (5") spacer underneath the dispenser to ease installation.
2. Remove four plastic, thread-protecting plugs from bottom of dispenser.
3. Screw each leg into chassis (**Fig. 3**).

Fig. 3



Maintenance/Cleaning Mode



Cleaning Mode (Dispensing Disabled) - Use when cleaning surface

Entering Cleaning Mode disables the User Interface and allows you to clean the outside of the dispenser without accidentally dispensing ice.

1. To enter Cleaning Mode, press and immediately release the maintenance/clean switch (**Fig. 4.1**) so that only "ICE" displays in the user interface (**Fig. 4.2**).
2. To exit Cleaning Mode, press and immediately release the maintenance/clean switch so that the ice icon also displays in the user interface.

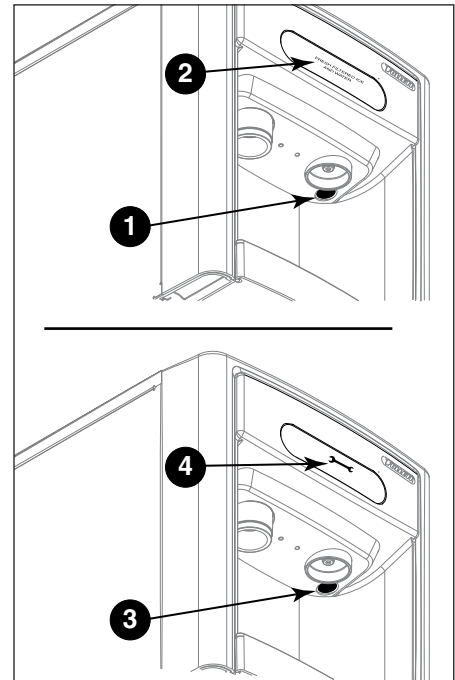
Maintenance Mode (All Operations Disabled) - Use when cleaning ice machine

Entering Maintenance Mode disables all operations and allows you to safely clean and/or sanitize the icemaker and dispenser.

1. To enter Maintenance Mode, press and hold the maintenance/clean switch (**Fig. 4.3**) until  displays in the user interface (**Fig. 4.4**).
2. To exit Maintenance Mode, press and hold the maintenance/clean switch until  no longer displays in the user interface.

Note: Entering and exiting Maintenance Mode will reset the six-month periodic maintenance reminder.

Fig. 4



Accessing Internal Components



CAUTION!

Except for routine cleaning and sanitizing, only qualified technicians should attempt to service or maintain this equipment.


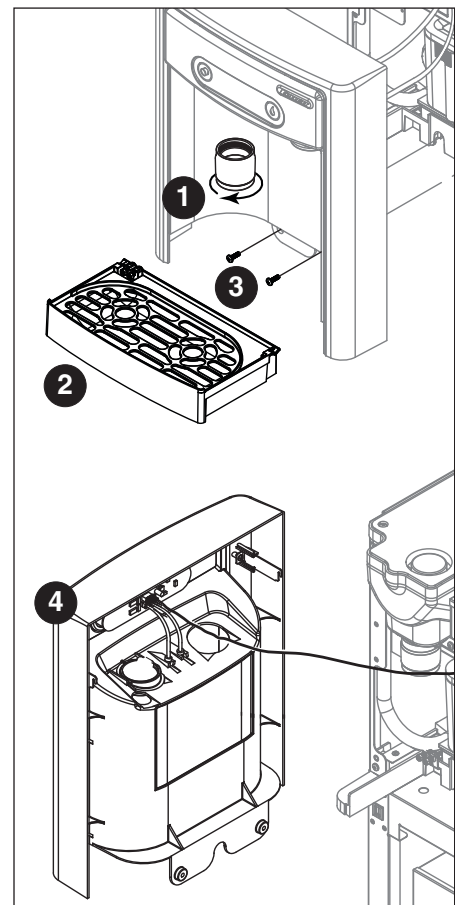
1. Press and hold the maintenance/clean switch (**Fig. 4.1**) until  displays in the user interface (**Fig. 4.2**).
2. Remove (unscrew) chrome ice dispenser chute (**Fig. 5.1**).
3. Remove the drip tray (**Fig. 5.2**).
4. Remove the two screws (**Fig. 5.3**) on the front panel (behind the drip tray).
5. Remove and set aside the front panel (**Fig. 5.4**) - **do not disengage the plug on the back of the User Interface.**

Fig. 5



Cleaning and Sanitizing Procedure

Cleaning and sanitizing should be performed at least every 6 months (more often if local water conditions dictate).

WARNING!

- Place the dispenser in Maintenance Mode prior to servicing or cleaning the ice machine. See [Maintenance/Cleaning Mode on page 9](#).
- For protection, rubber gloves and safety goggles (and/or face shield) should be worn when handling SafeCLEAN Plus™.
- Do not use bleach, it will damage the dispenser.

Required Supplies

- **E7 Series:** 0.621 L (21 oz.) or 3 packets SafeCLEAN Plus
- **E15 Series:** 1.24 L (42 oz.) or 6 packets SafeCLEAN Plus
- Funnel, bucket, 38 C (100 F) potable water

Ice machine and Dispenser


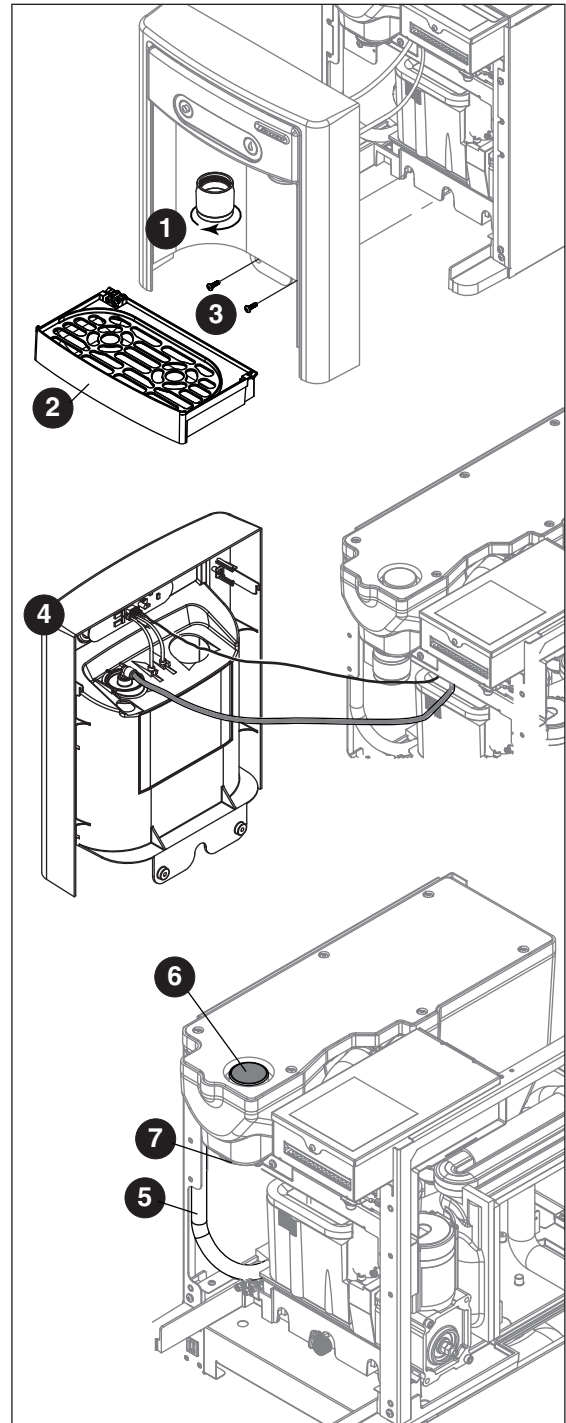
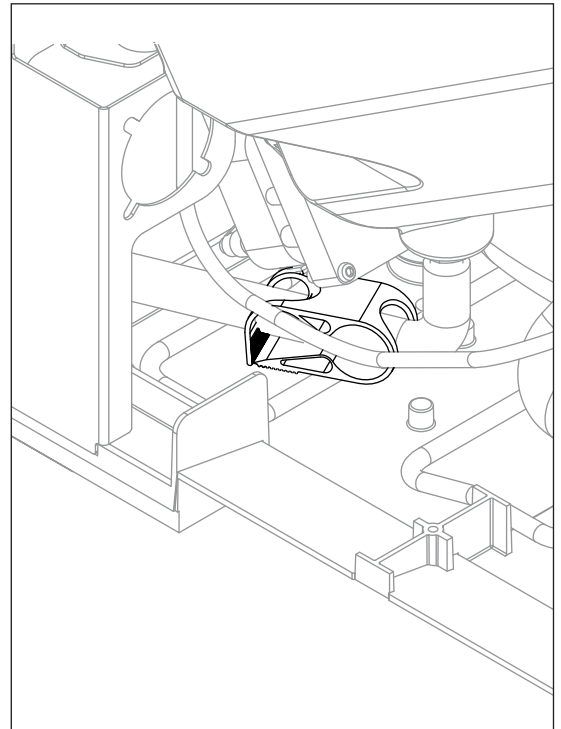
1. Dispense all the ice out of the unit.
2. Press and hold maintenance/clean switch until  displays in the user interface to enter Maintenance Mode.
3. Remove (unscrew) chrome ice dispense chute (**Fig. 6.1**).
4. Remove drip tray (**Fig. 6.2**).
5. Remove (2) screws located behind the drip tray (**Fig. 6.3**).
6. Move front panel and place on top or beside unit (**Fig. 6.4**).
7. Remove plug cap from the end of water reservoir drain tube (**Fig. 14.5**) and lower tube to drain water into bucket. After the system has been drained of water replace plug cap in water reservoir drain tube.
8. Secure tube in holder.
9. Remove cap from storage bin lid cover (**Fig. 6.6**).
10. Screw storage bin lid cover cap onto ice discharge chute (**Fig. 6.7**).

Fig. 6



11. Locate the storage bin drain tube pinch clamp (**Fig. 7**) and engage (close).
12. **E7 Series:** Mix 0.621 L (21 oz.) or 3 packets SafeCLEAN Plus with 11.4 L (3 gallons) of 38 C (100 F) potable water.
E15 Series: Mix 1.24 L (42 oz.) or 6 packets SafeCLEAN Plus with 22.7 L (6 gallons) of 38 C (100 F) potable water.
13. Pour cleaning solution into bin lid access spout until solution reaches *and remains level* at the spout neck. (Because the cleaning solution reaches the internal components via overflow into the ice transport tube, it is necessary to add cleaning solution until it remains level at the spout neck.)
14. Allow the solution to remain in unit for 15 minutes.
15. While machine is cleaning, remove top and right side panel to access and clean air-cooled condenser.
16. Submerge ice dispense chute in the remainder of solution for 2 minutes. Rinse with clean, potable water.
17. Drain system: (1) release (open) the storage bin drain tube pinch clamp and (2) lower water reservoir drain tube into bucket.
18. Secure capped water reservoir drain tube into holder and engage (close) storage bin drain tube pinch clamp.
19. Fill and drain three times with potable water. Secure water reservoir drain tube and release (open) the storage bin drain tube pinch clamp.
20. Place a bucket under the dispense chute and remove cap.
Note: Some solution will remain and drain out when cap is removed. Reposition cap on bin lid spout.
21. Reinstall front panel, ice dispense chute, and drip tray.
22. Press and hold maintenance/clean switch to exit Maintenance Mode.

Fig. 7



Cleaning and Sanitizing Procedure (continued)

User Interface and Exterior Cabinet

1. Press and release maintenance/clean switch so that only "ICE" displays in the user interface to enter Cleaning Mode (and disable dispensing).
2. Plastic parts, including the user interface, can be cleaned with a non-abrasive glass cleaner. Clean stainless steel panels with stainless steel cleaner.
3. Press and release maintenance/clean switch to put unit back into service.

Service

LED Indicator Description

The LED Indicator is located behind the front panel.

Fig. 8

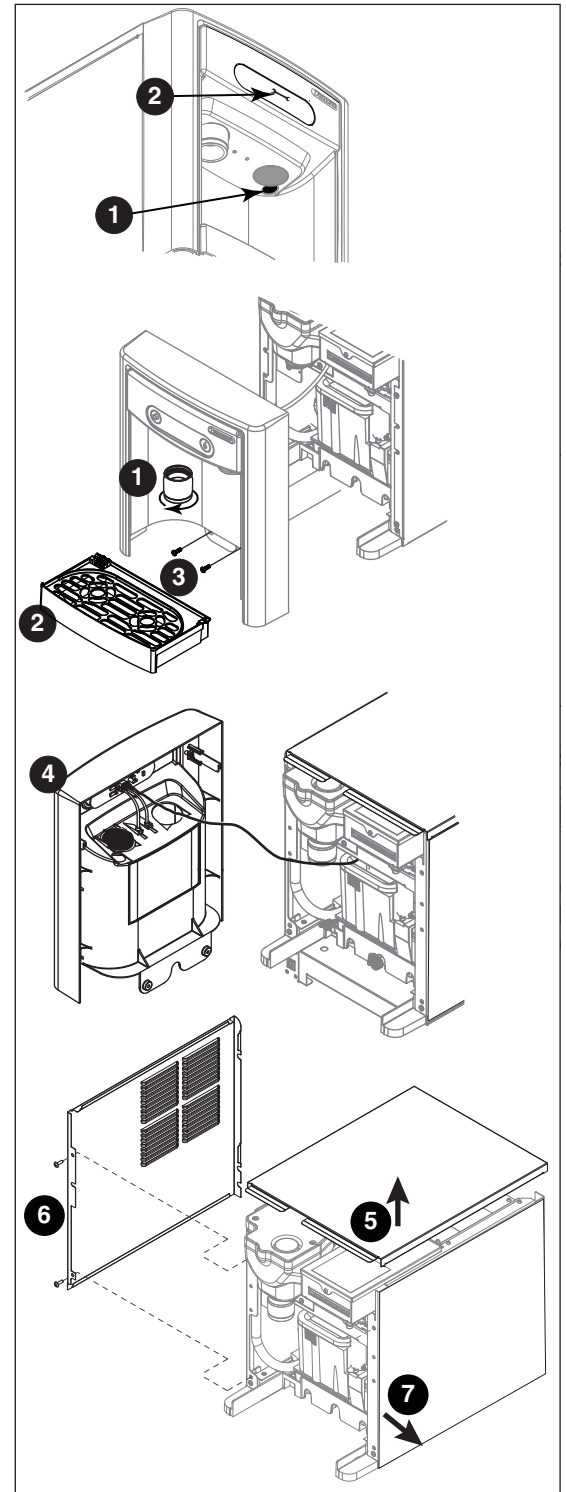


LED Name	LED Color	Description
Clean	Green	The dispenser is in Cleaning Mode. Dispenser is disabled to allow for cleaning of front panel. See Maintenance/Cleaning Mode on page 9 .
—	N/A	Not used.
PM	Red	Six-month periodic maintenance required.
Drip tray	Red	Drip tray full.
Water leak	Red	Internal leak in dispenser.
High amps	Red	Auger gearmotor has exceeded 0.55A. The HI amps and Time delay LEDs will illuminate, the machine will shut down for one hour, the LEDs will turn off, and the machine will resume normal operation.
Service	Red	8000 hour bushing check (call Follett technical service group at (877) 612-5086 or +1 (610) 252-7301).
Maintenance	Yellow	Enter Maintenance Mode by pressing and holding maintenance/clean switch for 5 seconds. Unit will not make or dispense ice.
Low water	Yellow	Insufficient water supply to machine or no low bin LED upon startup.
Time delay	Yellow	Ice production will not resume for at least 15 minutes after a full bin is achieved and a minimum amount of dispense activity has elapsed.
Sleep cycle	Green	After a full bin and 10 minutes of non-use, the unit goes into standby and will not produce ice until either: E7 Series: 12 hours has elapsed, E15 Series: 4 hours has elapsed or ice has dispensed.
Making ice	Green	Gearmotor, compressor, and fan motor energized.
Low bin	Green	Bin switch closed calling for ice.
Power on	Green	Power supplied to unit.

Evaporator Disassembly

1. Disconnect power from the dispenser.
2. Turn off water supply to dispenser.
3. Remove (unscrew) chrome ice dispenser chute (**Fig. 9.1**).
4. Remove the drip tray (**Fig. 9.2**).
5. Remove the two screws (**Fig. 9.3**) on the front panel (behind the drip tray).
6. Remove and set aside the front panel (**Fig. 9.4**) - **do not disengage the plug on the back of the User Interface**.
7. Lift and remove the top panel, set aside (**Fig. 16.5**).
8. Remove two screws (**Fig. 9.6**) and remove left side panel.
9. Remove two screws (**Fig. 9.7**) and remove right side panel.

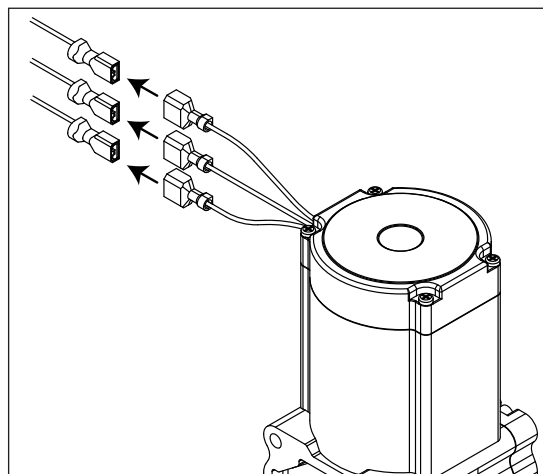
Fig. 9



Service (continued)

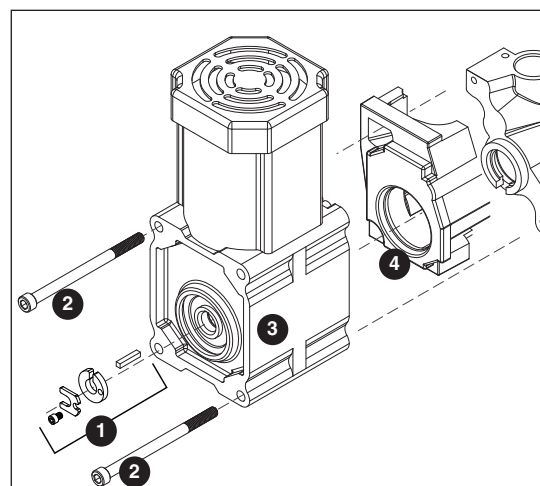
10. Unplug the gear motor (three connectors) (**Fig. 10**).
11. Remove ground screw connection.

Fig. 10



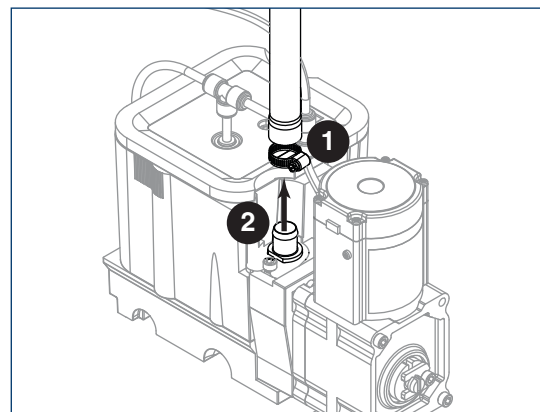
12. Remove gear motor:
 - Remove M6 allen screw, retainer, spacer and key (**Fig. 11.1**).
 - Remove two M6x90 allen screws (**Fig. 11.2**).
 - Pull gear motor from auger (**Fig. 11.3**).
 - Remove main housing insulation (**Fig. 11.4**).
13. Remove all traces of petro-gel from auger shaft.

Fig. 11



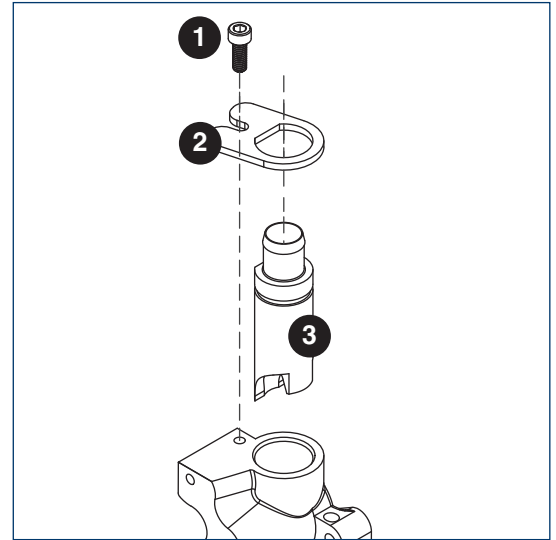
14. Remove compression nozzle:
 - Loosen hose clamp (**Fig. 12.1**).
 - Remove transport tube (**Fig. 12.2**).

Fig. 12



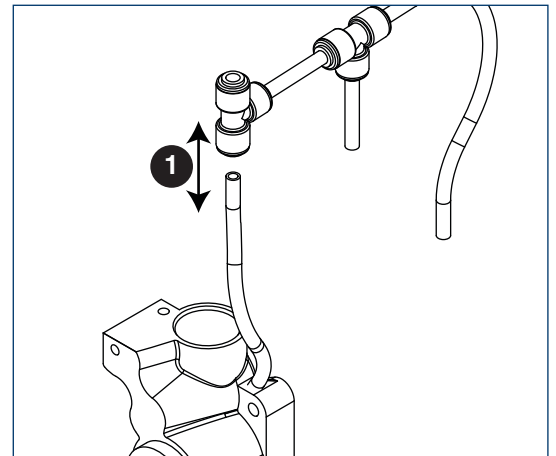
15. Remove M6 socket head allen screw (**Fig. 13.1**).
16. Remove compression nozzle retainer (**Fig. 13.2**).
17. Remove compression nozzle (**Fig. 13.3**).

Fig. 13



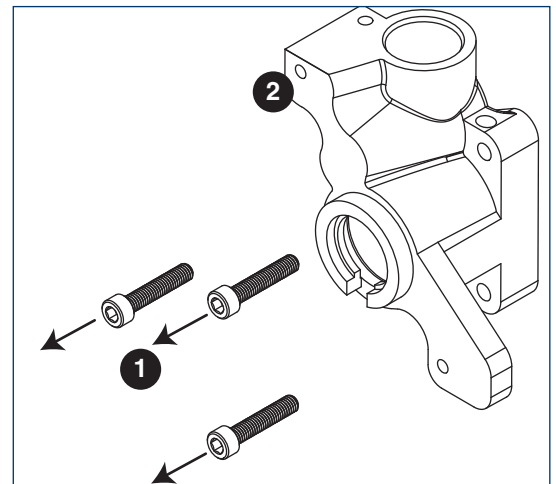
18. Remove main housing:
 - Disconnect vent line from T fitting (**Fig. 14.1**).

Fig. 14



19. Remove three M6x25 socket head allen screws (**Fig. 15.1**).
20. Remove main housing (**Fig. 15.2**).

Fig. 15



21. Remove and discard mating ring and seal (**Fig. 16.1**).
22. Carefully remove auger (**Fig. 16.2**).



WARNING!

Use caution when removing auger. The auger is very sharp - handle with care to avoid personal injury.

Evaporator Assembly

1. Remove and inspect main housing O-ring seal. Replace if damaged in any way.
 2. Clean O-ring groove. Lubricate O-ring with Petro-gel and reinstall.
 3. Use cardboard disc to press new mating ring into main housing (**Fig. 17.1**).
 4. Lube the shaft with liquid soap in the area shown (**Fig. 17.2**) and slip on seal and spring (**Fig. 17.3**).
- Note:** Do not touch the sealing surfaces with bare hands. Contact with bare skin will cause premature seal failure.
5. Install auger (**Fig. 17.4**).

6. Install main housing:
 - Slide main housing onto auger shaft (**Fig. 18.1**).
 - Install three M6x25 allen screws (**Fig. 18.2**).
 - Connect vent line to T fitting (**Fig. 18.3**).

Fig. 16

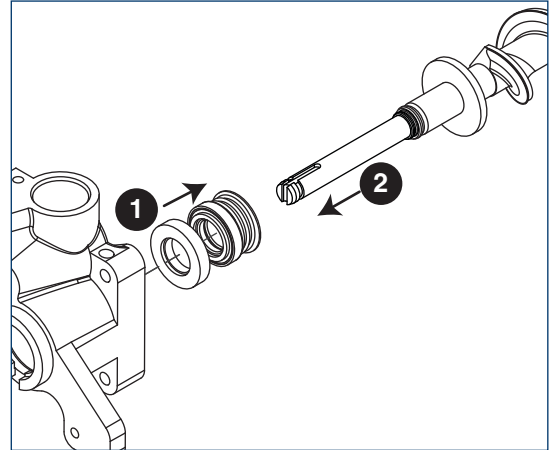


Fig. 17

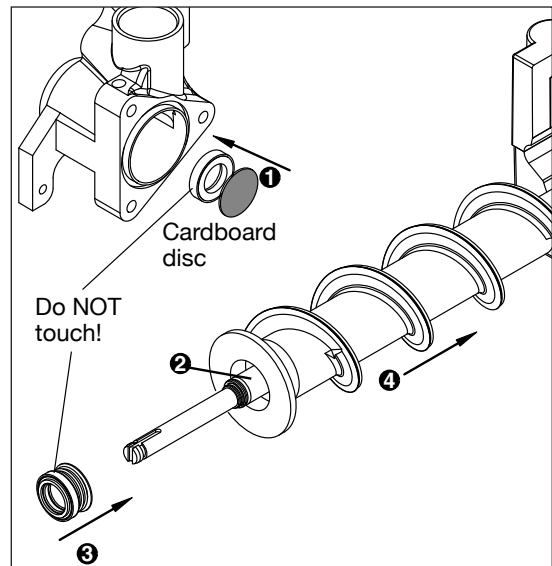
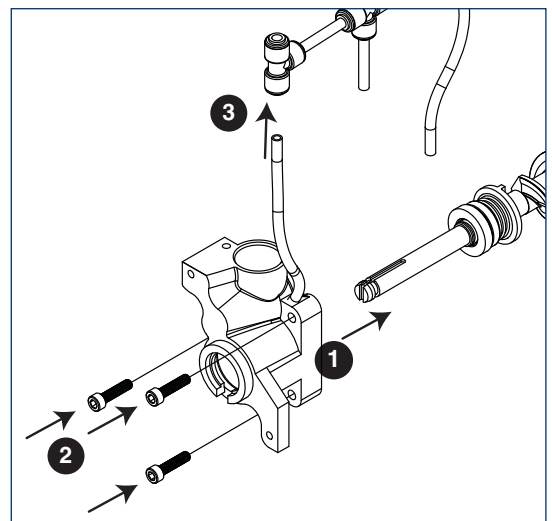


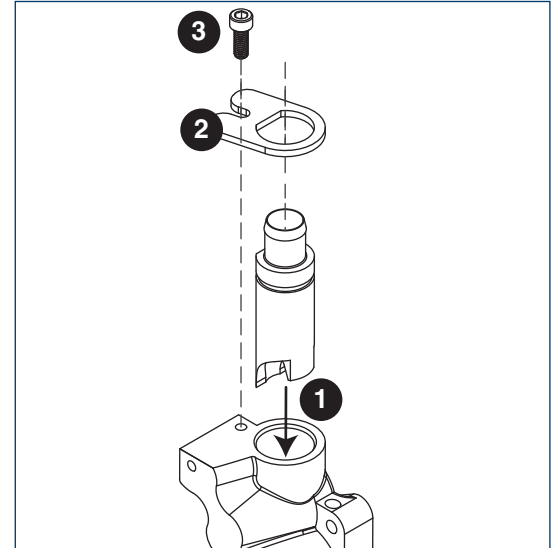
Fig. 18



7. Install compression nozzle:

- Remove and inspect compression nozzle O-ring seal. Replace if damaged in any way.
- Clean O-ring groove. Lubricate O-ring with Petro-gel and reinstall.
- Install compression nozzle (**Fig. 19.1**).
- Install compression nozzle retainer (**Fig. 19.2**).
- Install M6 socket head allen screw (**Fig. 19.3**).

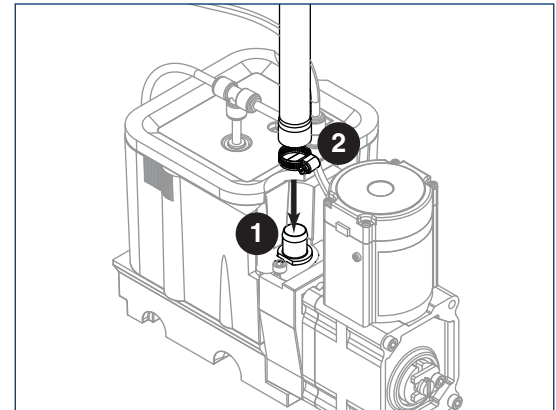
Fig. 19



8. Install transport tube (**Fig. 20.1**).

9. Tighten hose clamp (**Fig. 20.2**).

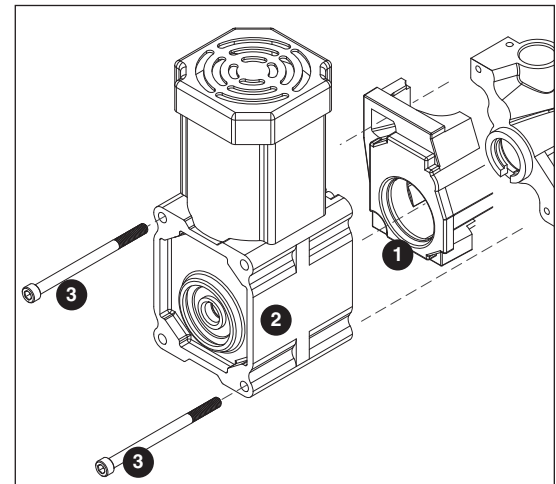
Fig. 20



10. Install gear motor:

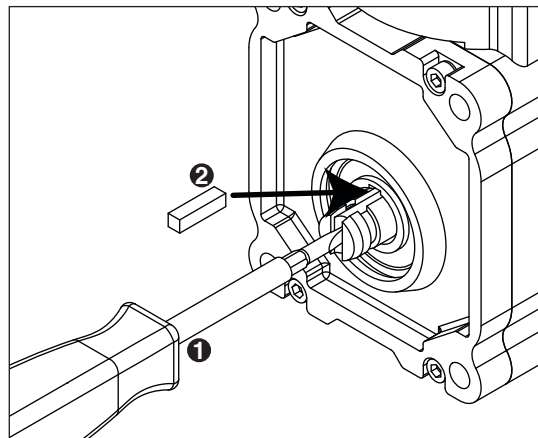
- Install main housing insulation (**Fig. 21.1**).
- Slide gear motor onto auger shaft (**Fig. 21.2**).
- Install two M6x90 allen screws (**Fig. 21.3**).

Fig. 21



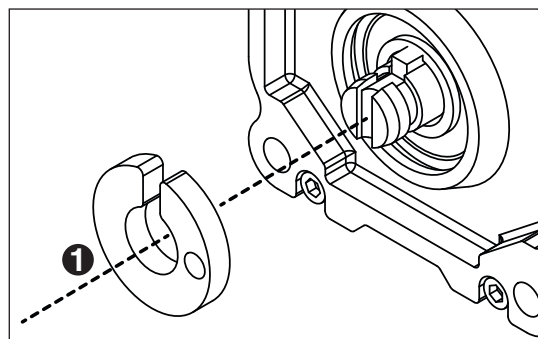
11. Use screwdriver to orient auger shaft to align with motor shaft keyway (**Fig. 22.1**).
12. Install key into keyway (**Fig. 22.2**).

Fig. 22



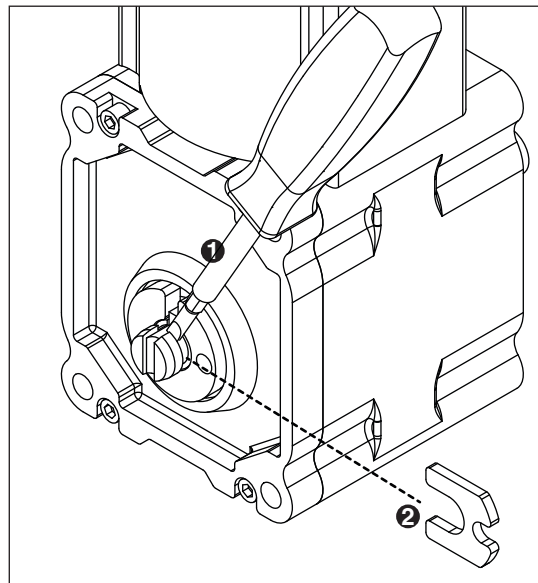
13. Install spacer, ensure that key is captured in slot (**Fig. 23.1**)

Fig. 23



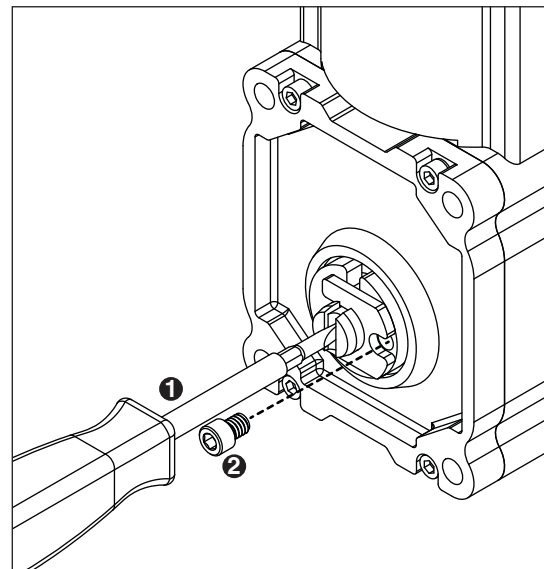
14. Insert screwdriver into groove of auger shaft and pry shaft outwards (**Fig. 24.1**).
15. Insert retainer into groove (**Fig. 24.2**), ensure that retainer is aligned with hole in spacer.

Fig. 24



16. Install screw and tighten (**Fig. 25.1**).

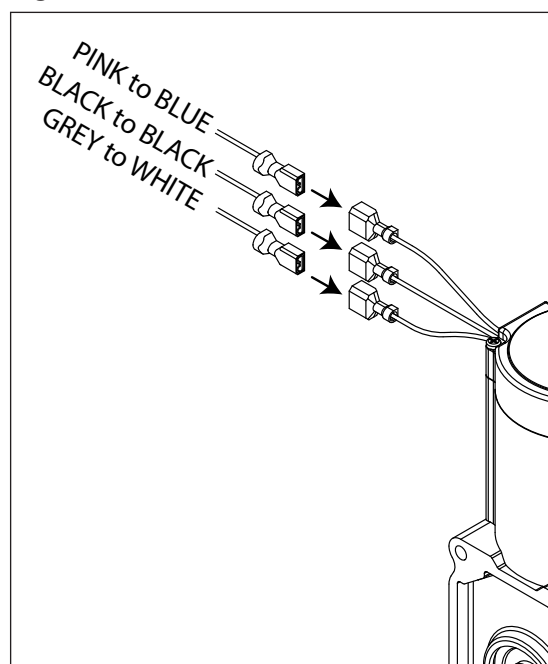
Fig. 25



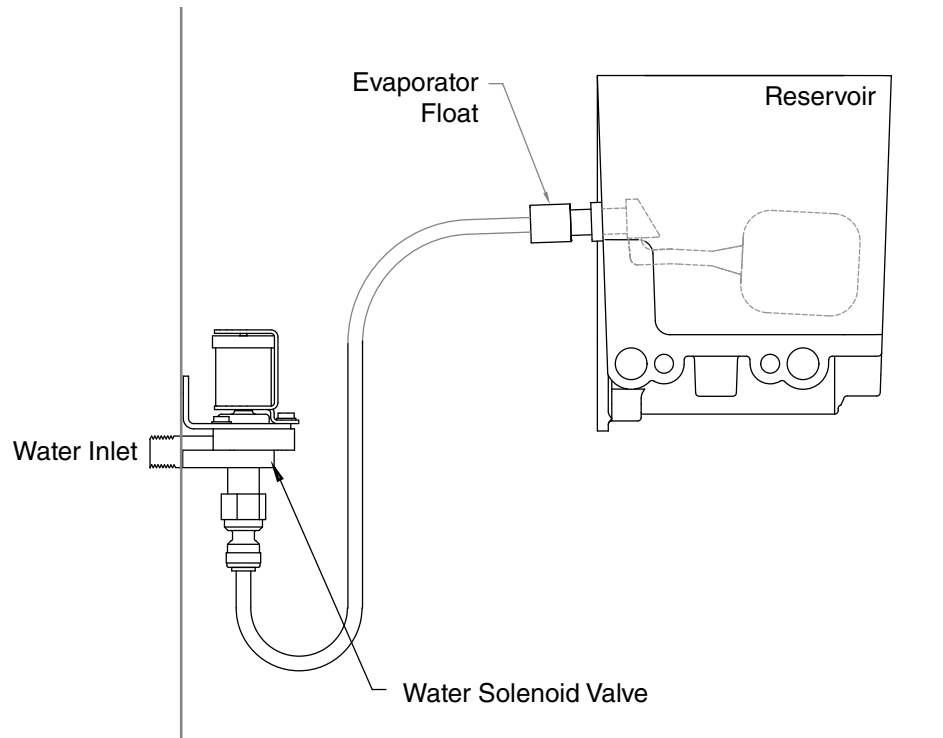
17. Plug in gear motor (**Fig. 26**).

- PINK to BLUE
- BLACK to BLACK
- GREY to WHITE
- Connect ground wire with ground screw.

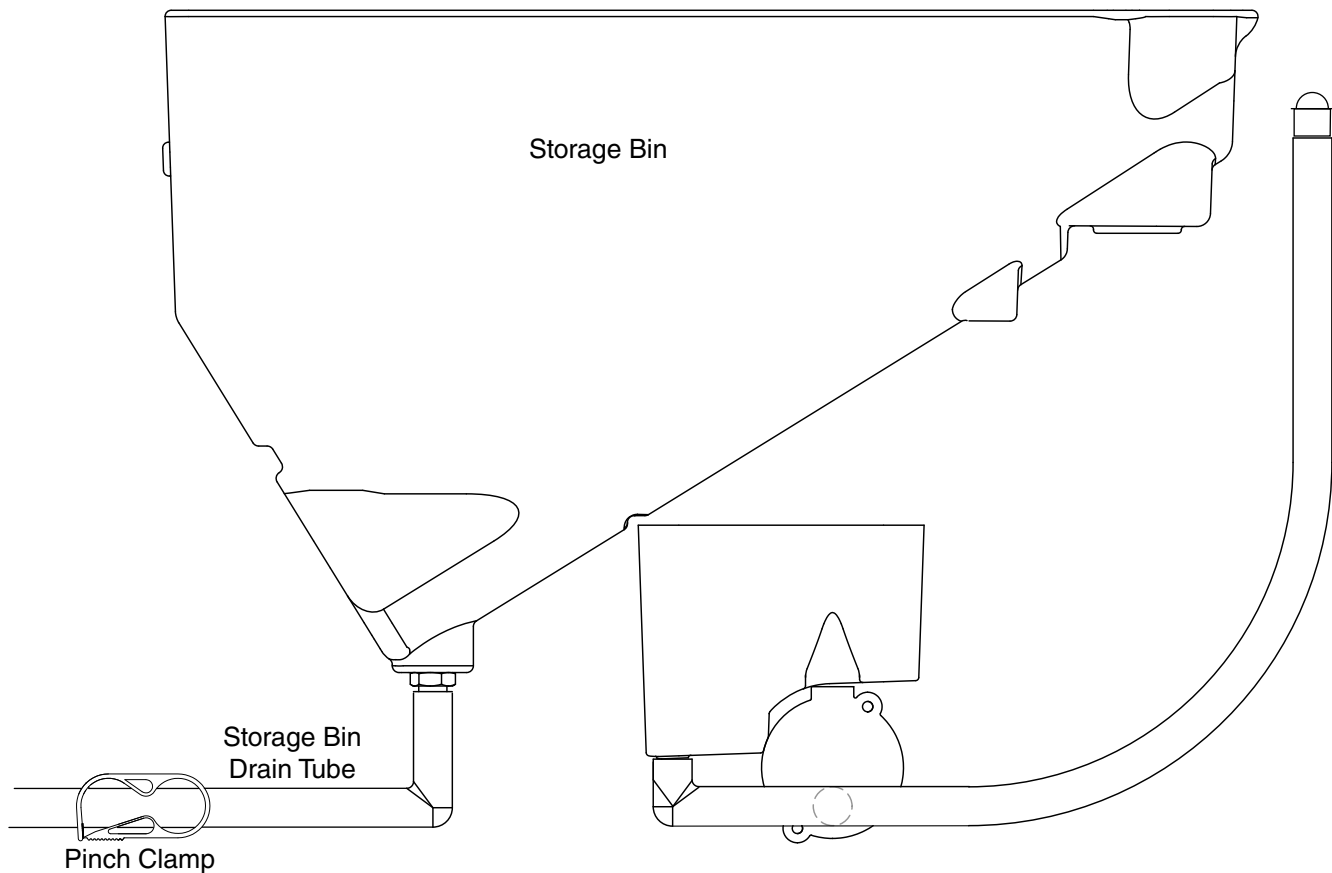
Fig. 26



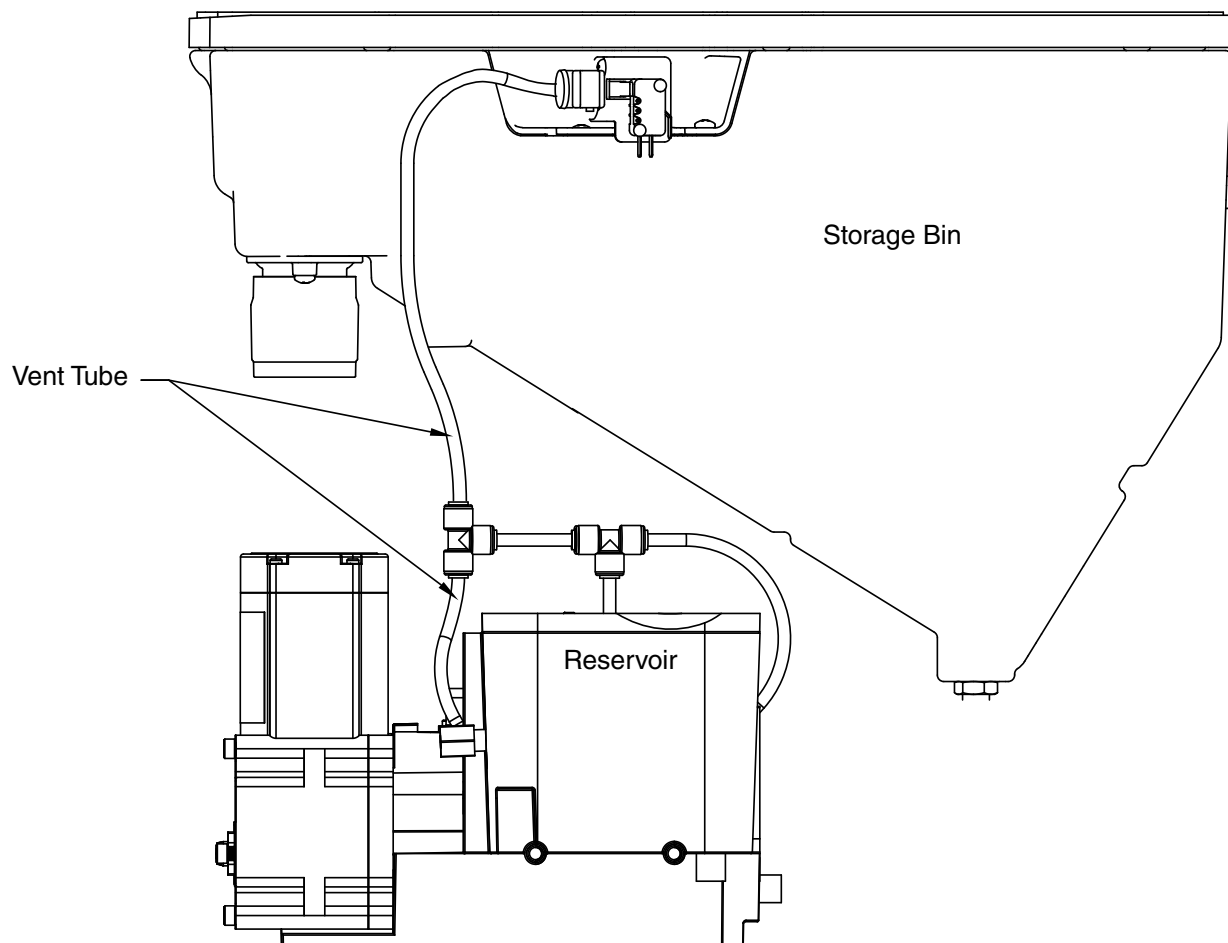
Water Feed Schematic



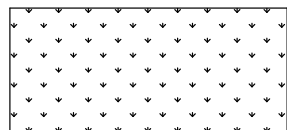
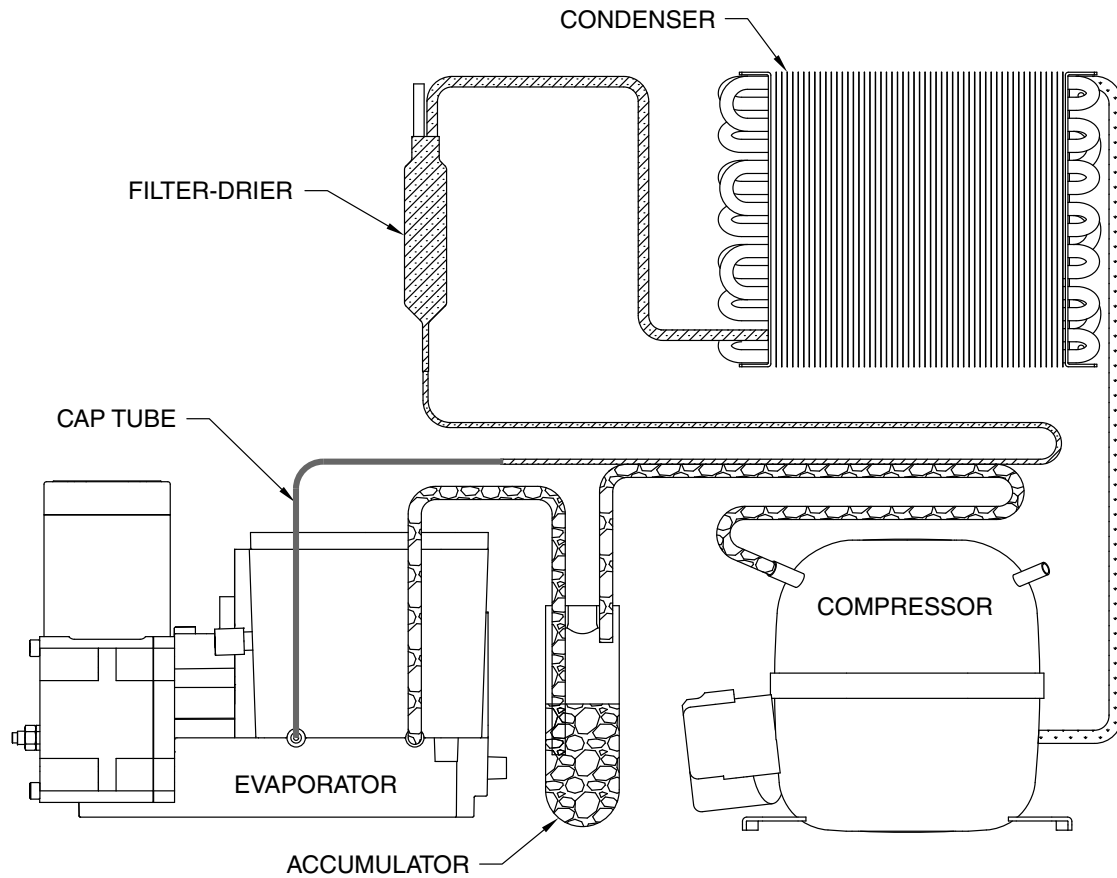
Storage Bin Melt Water/Evaporator Feed/Clean Out System Schematic



Vent System Schematic



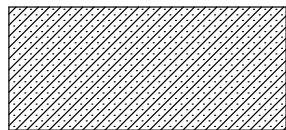
Refrigeration Schematic



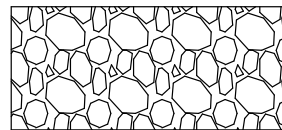
HIGH PRESSURE VAPOR



LOW PRESSURE LIQUID

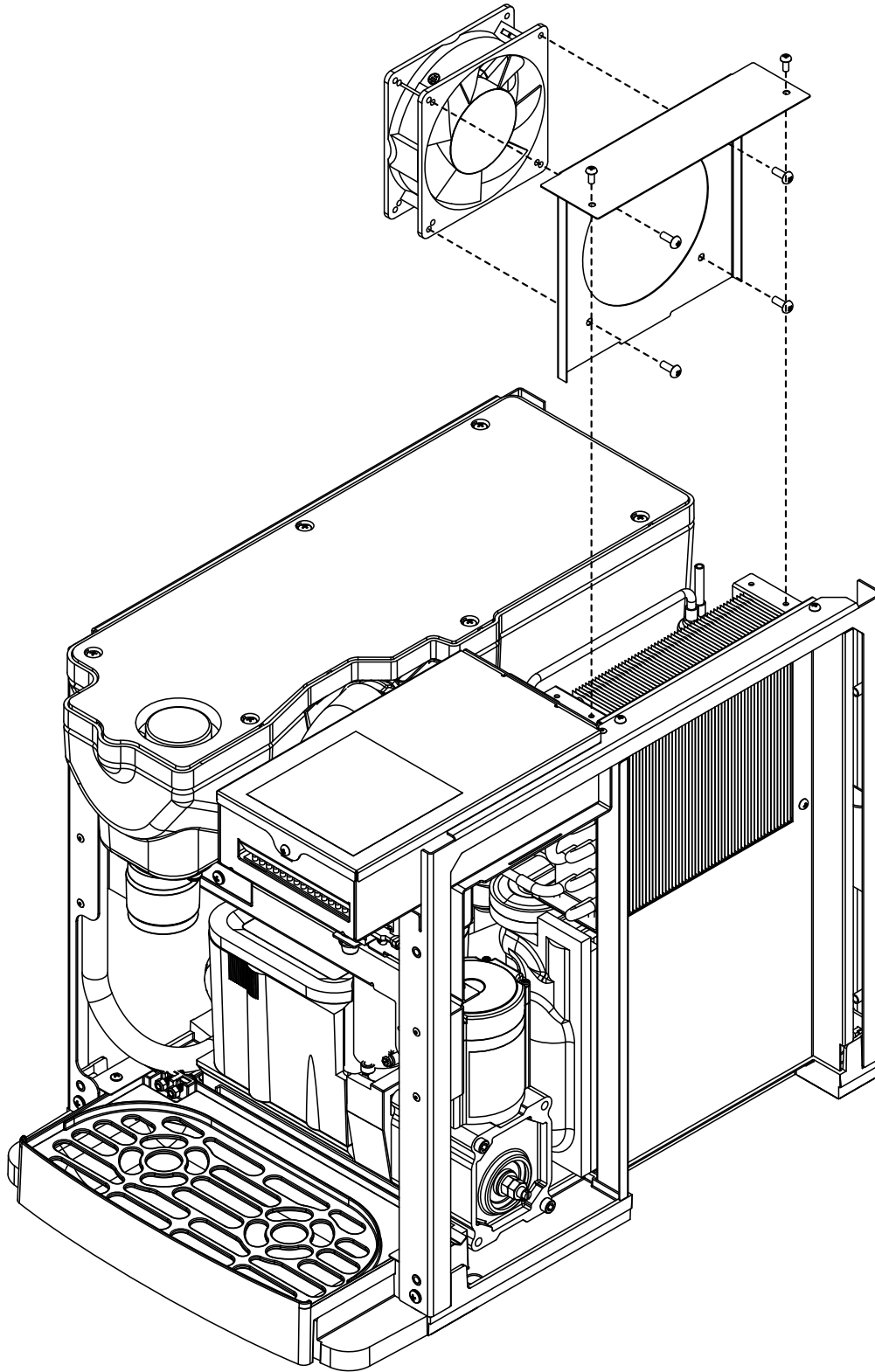


HIGH PRESSURE LIQUID

















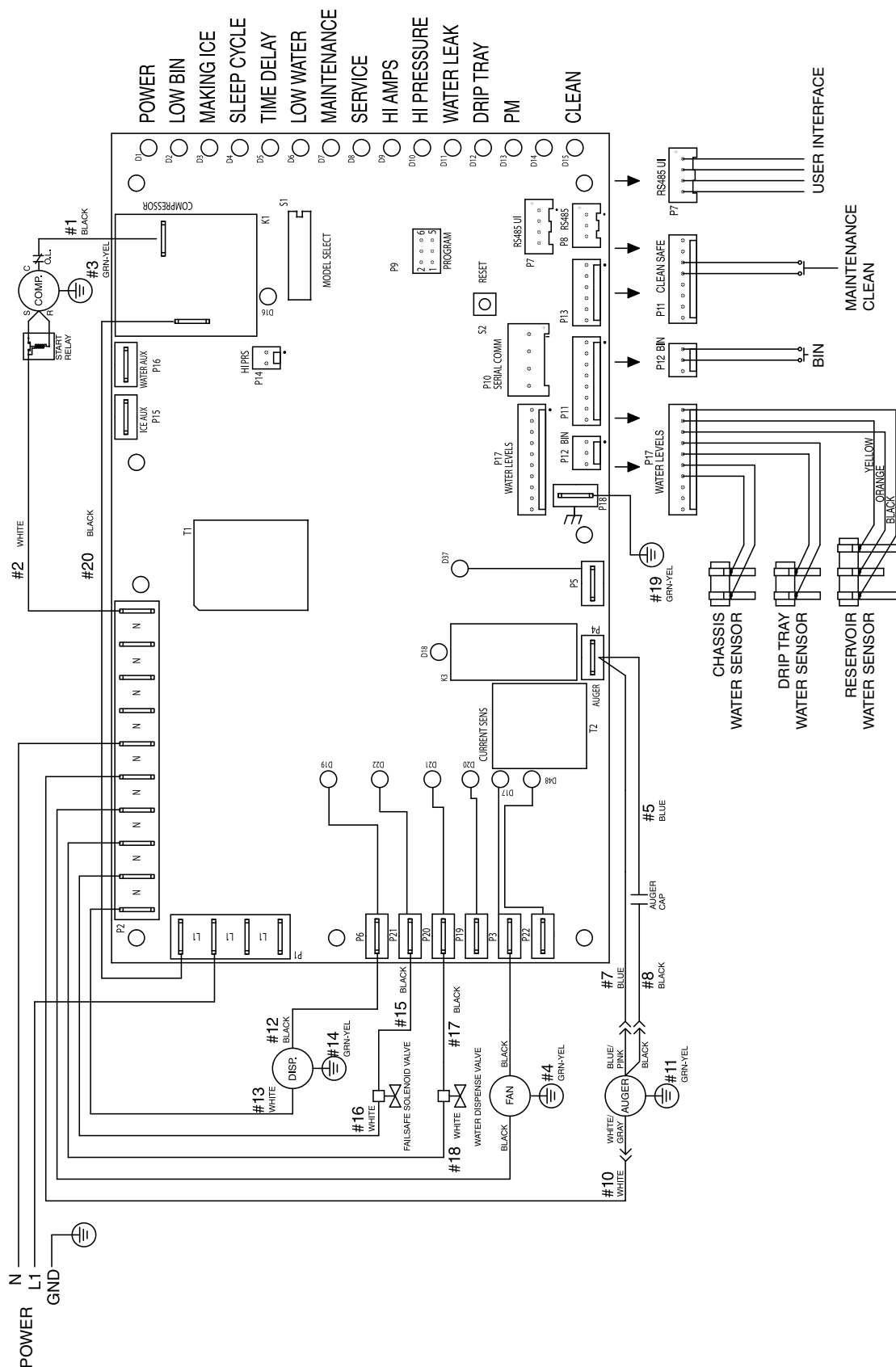
LOW PRESSURE VAPOR

Condenser Fan Motor Removal (E7 Series Shown)



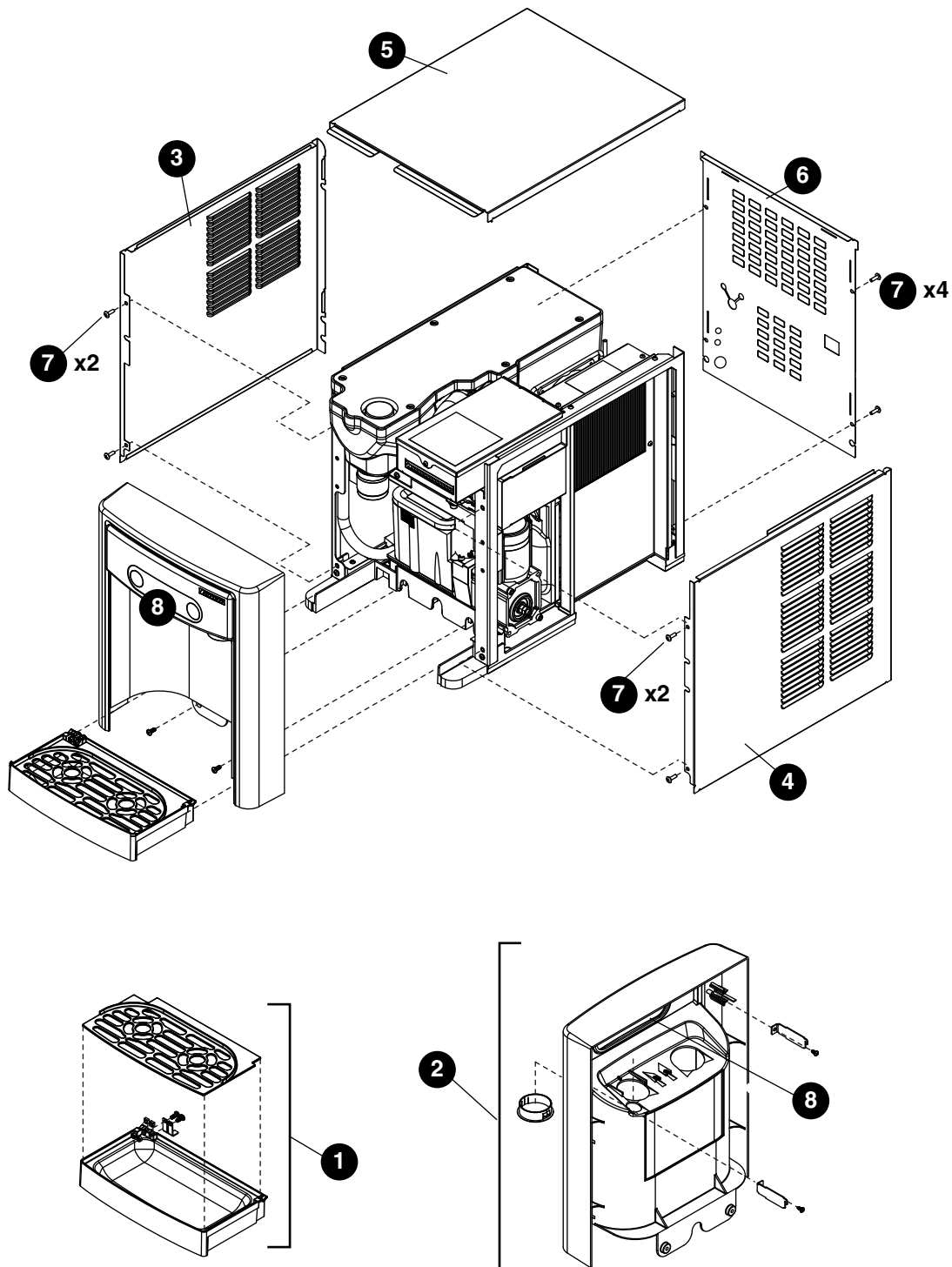
User Interface Display Identification

Operation Display	Condition	Procedure
 ICE	Normal operation	—
ICE	Cleaning Mode	Press and release maintenance/clean switch to clean the user interface without dispensing ice (see Maintenance/Cleaning Mode on page 9).
ICE EMPTY DRIP TRAY	Drip tray full	Empty drip tray.
 ICE  PM	Six-month periodic maintenance required	Follow Maintenance Mode procedure (below) and also see NSF-approved Cleaning and Sanitizing Procedure on page 10 .
	Maintenance Mode	Enter Maintenance Mode by pressing maintenance/clean switch until  displays. Complete the cleaning and sanitizing procedure shown on page 10 . Exit Maintenance Mode by pressing and holding maintenance/clean switch until  no longer displays.
 ICE 	Service - 8000 hr bushing check	Call Follett Technical Service Group at (877) 612-5086 or +1 (610) 252-7301. The flashing wrench indicates that the 8000 hr bushing check is required.
 ICE  	High amps	Contact Follett technical service group at (877) 612-5086 or +1 (610) 252-7301. Note: For dispensers after serial number D45191, the phone and wrench will <i>not</i> be illuminated.
  ICE CHECK FOR LEAKS	Internal leak in dispenser	Locate leak and repair - Press reset on control board. Contact Follett if icemaker is leaking.
	Sleep mode	Press either dispense button to return to normal operation.



Parts

E7 Series Exterior

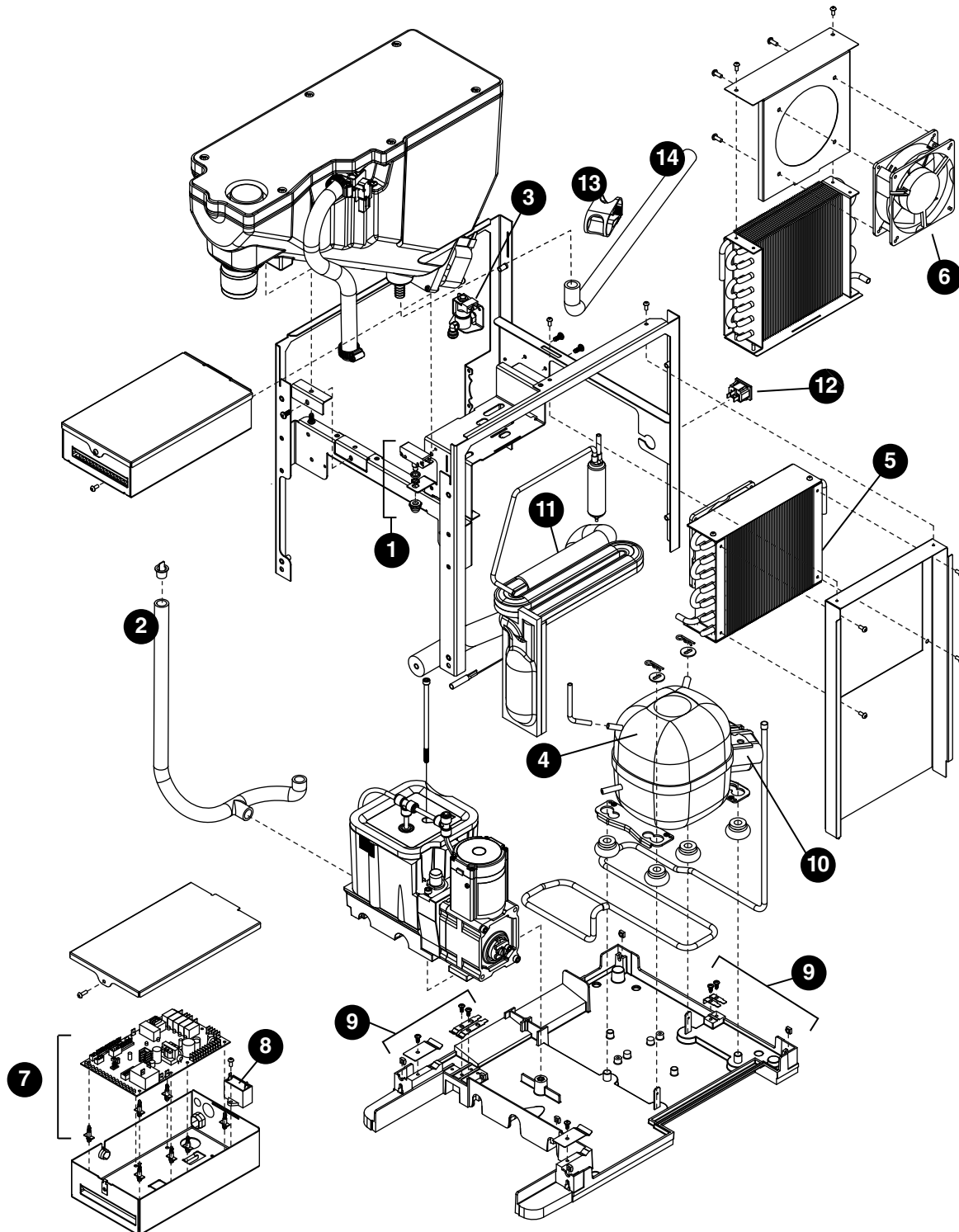


Parts (continued)

Exterior

Reference #	Description	Part #
1	Drip Tray Assy	00957613
2	Panel, Front Assy	00957621
3	Panel, Left	00932806
4	Panel, Right	00932798
5	Panel, Top	00957654
6	Panel, Rear	00974873
7	Screw, M5 x 12 Phillips	00931931
8	User Interface	00933879
Not Shown	E7 Series Packaging for Returns, Dispenser	00957993
Not Shown	Fitting, Elbow - 1/4" FPT x 1/4" Tube	00974261
Not Shown	Drip Tray Drain Kit	00956375
Not Shown	Drip Tray Drain Kit with 4" legs	00981977
Not Shown	Covers, Agion, User Interface	00969030
Not Shown	1/2" Barb Fitting, Drain Tube	01094929
Not shown	Bushing, Rear Panel	00117929

E7 Series Interior

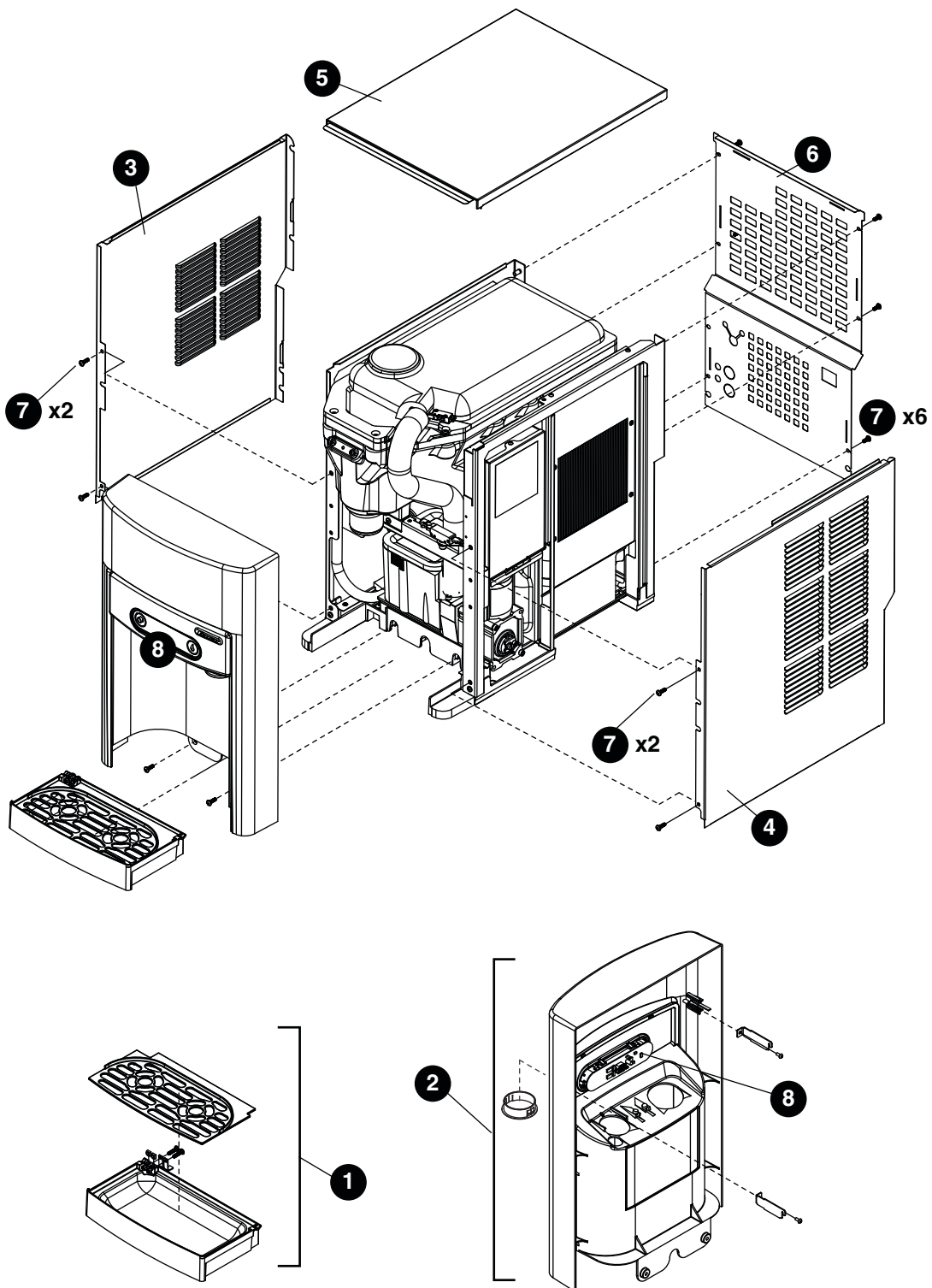


Parts (continued)

Interior

Reference #	Description	Part #
1	Switch, Cleaning	00957712
2	Drain/Feed Tube with Cap	01102946
3	Valve, Failsafe Solenoid	00968925
4	Compressor with Mounting Hardware (230 V/50 Hz)	00968933
5	Condenser	00958017
6	Condenser Fan and Cord	00968941
7	Control Board with Stand-offs	00969048
8	Capacitor, Gearmotor	00968958
9	Sensor, Retainer Hardware Kit	00958066
10	Relay and Overload (230 V/50 Hz)	00968966
11	Refrigeration, Piping Assy	00958132
12	Power Input	00968974
13	Pinch clamp, Storage Bin Tubing	00988238
14	Tubing, Storage Bin Drain (includes barb fitting and hose clamp)	01102979
Not Shown	Cord, Power IEC60320-C13 to BS 1363	00976753
Not Shown	Cord, Power IEC60320-C13 to AS 3112	00976761
Not Shown	Cord, Power IEC60320-C13 to CEE 7/7	00976779
Not Shown	Cord, Power IEC60320-C13 to NBR 14136	01063320
Not Shown	Cord, Power IEC60320-C13 to KSC 8305	01063338

E15 Series Exterior

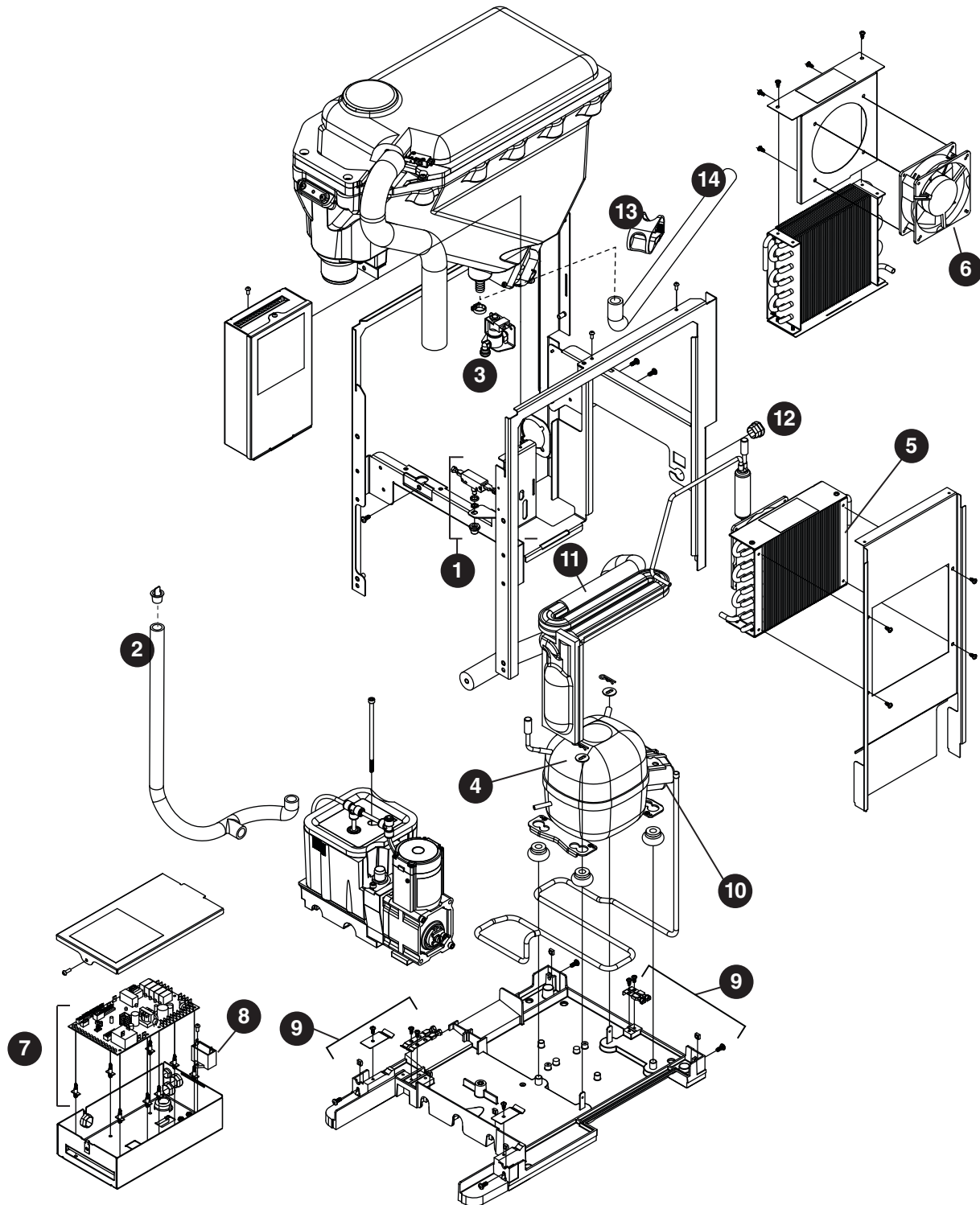


Parts (continued)

Exterior

Reference #	Description	Part #
1	Drip Tray Assy	00957613
2	Panel, Front Assy	01036425
3	Panel, Left	01026343
4	Panel, Right	01026335
5	Panel, Top	01054733
6	Panel, Rear	01047729
7	Screw, M5 x 12 Phillips	00931931
8	User Interface	00933879
Not Shown	E15 Series Packaging for Returns, Dispenser	01054634
Not Shown	Fitting, Elbow - 1/4" FPT x 1/4" Tube	00974261
Not Shown	Drip Tray Drain Kit	00956375
Not Shown	Drip Tray Drain Kit with 4" legs	00981977
Not Shown	1/2" Barb Fitting, Drain Tube	01094929
Not shown	Bushing, Rear Panel	00117929

E15 Series Interior

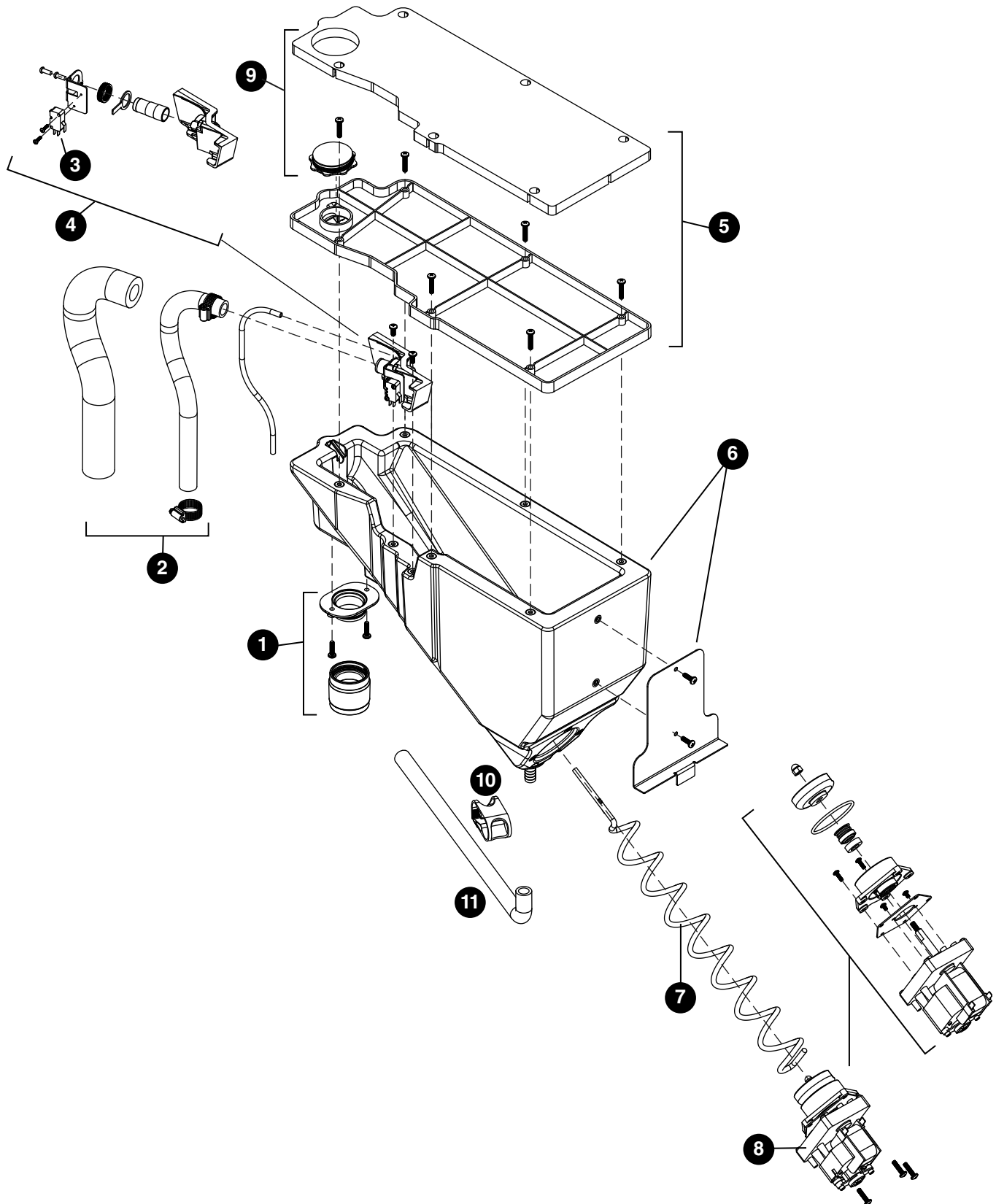


Parts (continued)

Interior

Reference #	Description	Part #
1	Switch, Cleaning	00957712
2	Drain/Feed Tube with Cap	01102946
3	Valve, Failsafe Solenoid	00968925
4	Compressor with Mounting Hardware (230 V/50 Hz)	00968933
5	Condenser	00958017
6	Condenser Fan and Cord	00968941
7	Control Board with Stand-offs	01051986
8	Capacitor, Gearmotor	00968958
9	Sensor, Retainer Hardware Kit	00958066
10	Relay and Overload (230 V/50 Hz)	00968966
11	Refrigeration, Piping Assy	00958132
12	Power Input	00968974
13	Pinch clamp, Storage Bin Tubing	00988238
14	Tubing, Storage Bin Drain (includes barb fitting and hose clamp)	01102979
Not Shown	Cord, Power IEC60320-C13 to BS 1363	00976753
Not Shown	Cord, Power IEC60320-C13 to AS 3112	00976761
Not Shown	Cord, Power IEC60320-C13 to CEE 7/7	00976779
Not Shown	Cord, Power IEC60320-C13 to NBR 14136	01063320
Not Shown	Cord, Power IEC60320-C13 to KSC 8305	01063338

E7 Series Bin Assembly

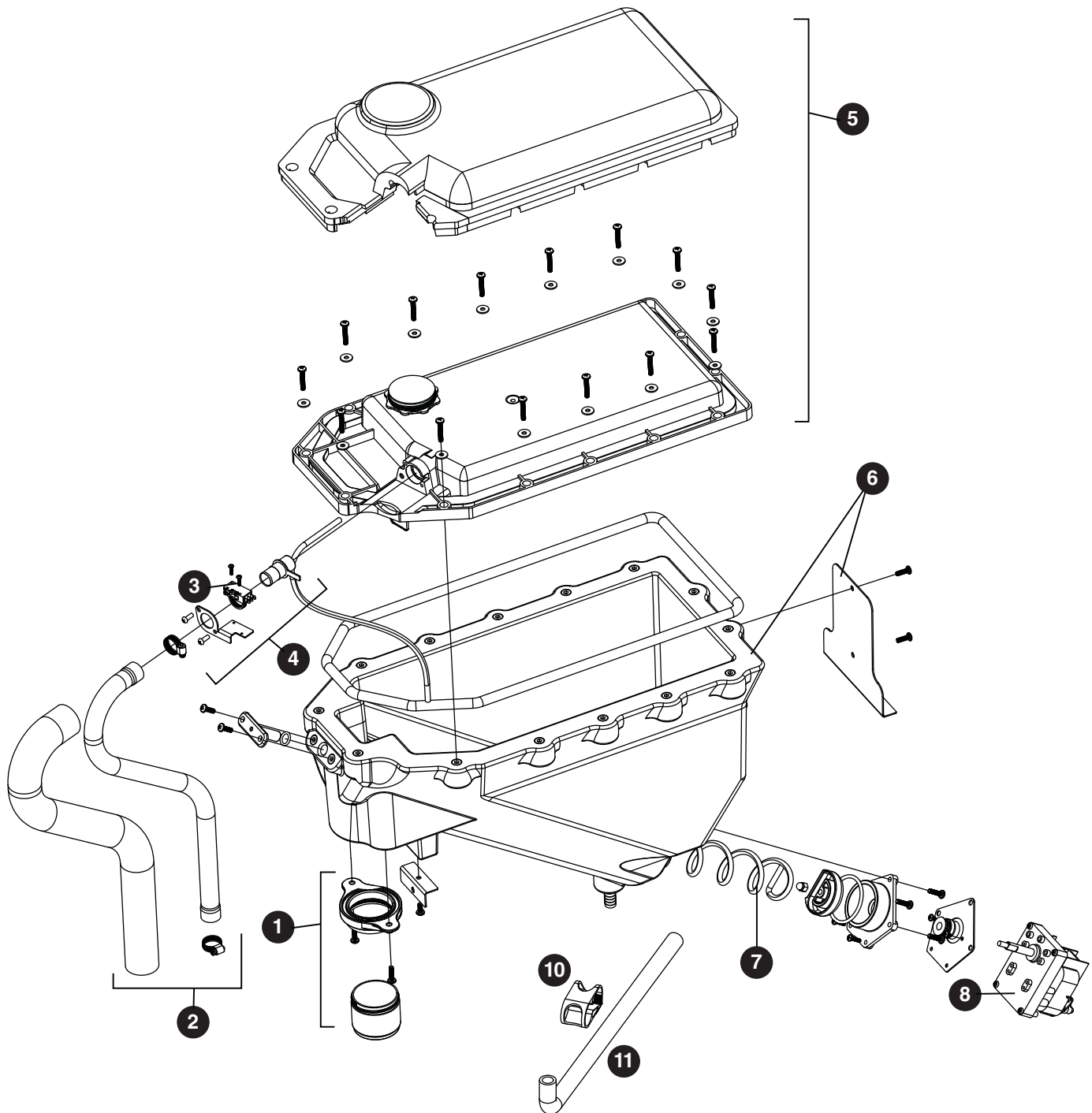


Parts (continued)

E7 Series Bin Assembly

Reference #	Description	Part #
1	Ice Chute Assembly	00957670
2	Ice Transport Tubing with Insulation	01102953
3	Switch, Shuttle	00957753
4	Shuttle, Complete Assy	00957761
5	Lid, Storage Bin Assy	00957779
6	Storage Bin, Assy	00957787
7	Auger, Dispense	00931113
8	Motor, Dispense	00968982
9	Cap and Insulation, Storage Bin	00957936
10	Pinch clamp, Storage Bin Tubing	00988238
11	Tubing, Storage Bin Drain (includes barb fitting and hose clamp)	01102979

E15 Series Storage Bin Assembly



Parts (continued)

E15 Series Storage Bin Assembly

Reference #	Description	Part #
1	Ice Chute Assembly	01051846
2	Ice Transport Tubing with Insulation	01102425
3	Switch, Shuttle	00957753
4	Shuttle, Complete Assy	01053248
5	Lid, Storage Bin Assy	01053255
6	Storage Bin, Assy	01053263
7	Auger, Dispense	01026251
8	Motor, Dispense	00968982
9	Cap and Insulation, Storage Bin	01053305
10	Pinch clamp, Storage Bin Tubing	00988238
11	Tubing, Storage Bin Drain (includes barb fitting and hose clamp)	01102979

Parts (continued)

Evaporator Assembly

Reference #	Description	Part #
1	Gearmotor Assy	00968990
2	Main Housing with Front Seal and Screws	00957829
3	Screws, Main Housing	00957837
4	Auger with front seal	00957845
5	Ice Compression Nozzle Assy	00957852
6	Front Seal and O-Ring	00957860
7	Evaporator Assembly with Insulation	00957878
8	Housing, Bushing with Insulation	00957886
9	Hardware kit, Gearmotor (For serial numbers E01087 and above)	01048628
9	Hardware kit, Gearmotor (For serial numbers below E01087)	00957894
10	Reservoir and Float Complete Assy	00957902
11	Lid, Reservoir with Insulation and O-Ring	00957910
12	Float Valve	00957928
13	"T" Fitting - 1/4"	502923
14	Tubing - 1/4" (sold in 12" increments)	502079

SafeCLEAN Plus is a trademark of Follett Corporation.
Chewblet and Follett are registered trademarks of Follett Corporation, registered in US.



801 Church Lane • Easton, PA 18040, USA
Toll free (877) 612-5086 • +1 (610) 252-7301
www.follettice.com

Follett Europe Polska Sp. z o.o.
Mokry Dwór 26 c • 83-021 Wiślina, Poland
+48 (58) 785-6140 • Fax +48 (58) 785-6159
www.folletteurope.com



01103522R00

© Follett Corporation 8/15