

Description

Follow these instructions to replace the water solenoid on your 7 Series or 15 Series dispenser.



CAUTION!

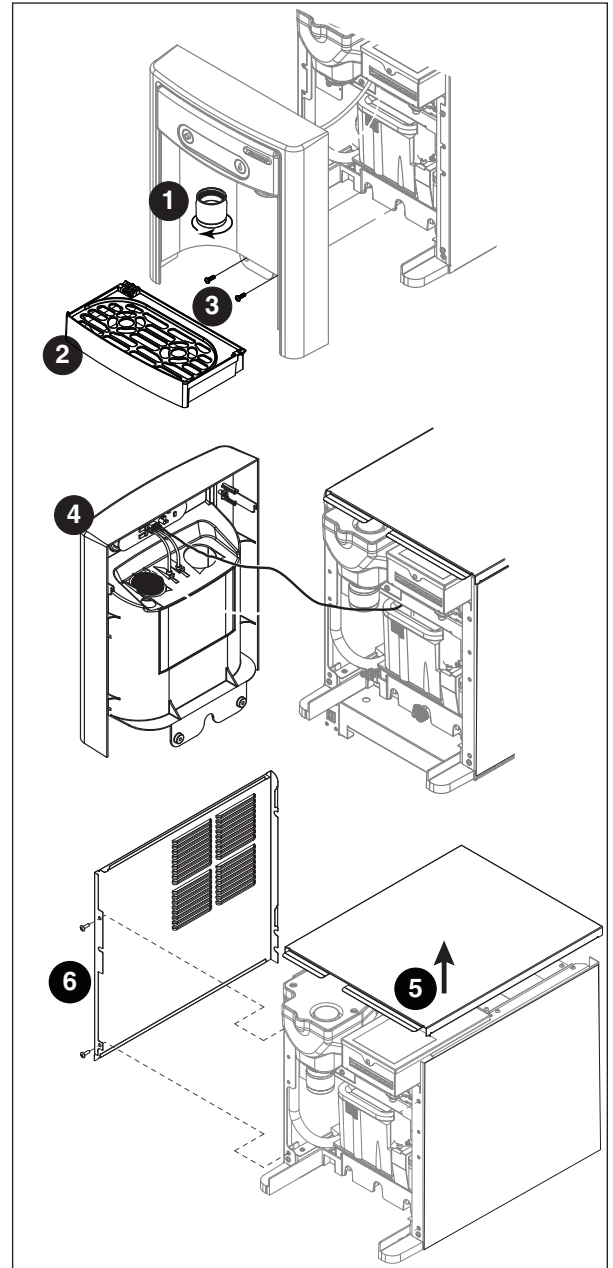
Only qualified technicians should attempt to service or maintain this equipment.

If you experience any problems during the installation process, please call Follett Technical Service toll-free at (877) 612-5086 or +1 (610) 252-7301 for assistance.

Access Internal Components

1. Unplug dispenser.
2. Turn off water supply to dispenser.
3. Remove (unscrew) chrome ice dispenser chute (Fig. 1.1).
4. Remove the drip tray (Fig. 1.2).
5. Remove the two screws (Fig. 1.3) on the front panel (behind the drip tray).
6. Remove and set aside the front panel (Fig. 1.4) - **do not disengage the plug on the back of the User Interface.**
7. Lift and remove the top panel, set aside (Fig. 1.5).
8. Remove two screws (Fig. 1.6) and remove left side panel.

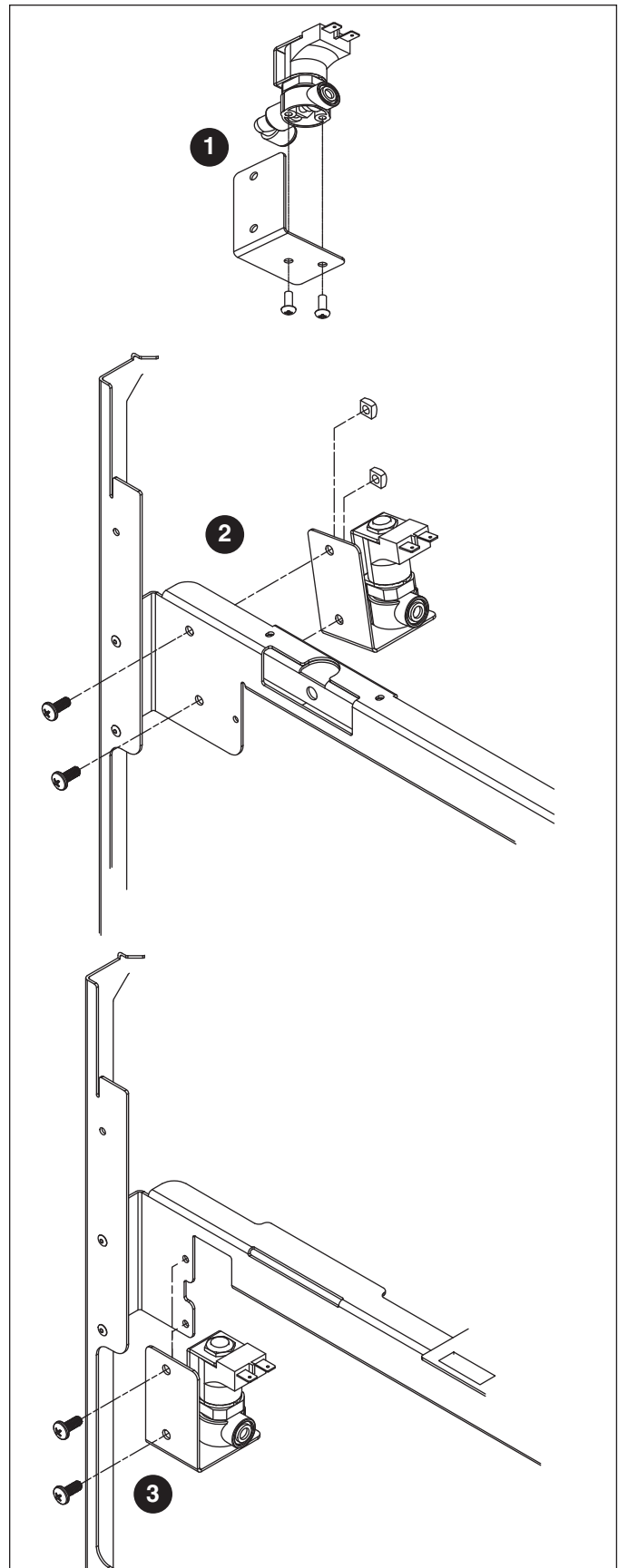
Fig. 1



Procedure

1. Disconnect the wires from the spade terminal of the old water solenoid.
2. Remove the water lines from the john guest fittings.
3. Unscrew/unbolt and remove the old water solenoid and discard.
4. Bolt the water solenoid valve to the front horizontal frame member using the appropriate hardware. **(Fig. 2)**. Note: Other components not shown for clarity.
 - For 7 Series before serial number L84098 and 15 Series before serial number L84019: the new valve must be mounted to an adapter plate **(Fig. 2.1)**. This can be mounted with two included pointed-tip screws. The bracket then gets mounted to the sheet metal using the same method that was used originally:
 - For units that originally used nuts and screws **(Fig. 2.2)**.
 - For units that originally used just screws **(Fig. 2.3)**.
 - For 7 Series after serial number L84097 and 15 Series after serial number L84018: the valve can be mounted directly to the unit frame using the pointed-tip screws.
5. Connect the black and white wires to the two spade terminals on the solenoid (wires are on all models).
6. Reconnect water lines to the water solenoid - make sure the tubing is completely seated in the john guest fittings.
7. Reassemble dispenser, turn on water supply, and restore power to dispenser. Test for leaks and ensure proper dispenser operation.

Fig. 2



Follett is a registered trademark of Follett Products LLC, registered in US.

FOLLETT[®]

801 Church Lane • Easton, PA 18040, USA
Toll free (877) 612-5086 • +1 (610) 252-7301
www.follettice.com

01383603R00
© Follett Products LLC 11/20