

# Follett Performance Plus

The next level of control in  
undercounter refrigeration



# Follett Performance Plus

Follett has long been an industry leader in medical-grade refrigerators and freezers, offering high-performance, high-quality products backed by unmatched service and support. Follett Performance Plus provides superior overall reliability with high-performance temperature control for critical product storage.

Built for outstanding durability and serviceability, Performance Plus offers value-added, next generation features, including an intuitive user interface and sleek, modern design. Discover the next level of control in medical-grade undercounter refrigeration with Follett Performance Plus.



# The convenience you want, the security you need

When it comes to critical product storage, there's no room for error. That's why Performance Plus is engineered for maximum ease-of-use and the highest safeguards for product security.

- Refrigeration system settings are conveniently accessed through top door-mounted controller functions, available in LED or LCD touchscreen, for visibility and ease-of-use
  - ▶ Adjustable refrigeration set point provides precise temperature control
  - ▶ Sleep mode turns off temperature display, if desired
  - ▶ LCD touchscreen control package provides enhanced data management and product protection features
- User-programmable audible and visual high/low alarms provide protection for valuable stored products
  - ▶ Dry (NO and NC) contacts accessory allows connection to remote alarm systems
- Mechanical lock supports Joint Commission standards for medication storage
  - ▶ Optional keypad access control available
- Universal door bracket allows Follett Performance Plus refrigerators and freezers to be used with all automated medication dispensing locking systems
- Rear access port provides easy probe entry to third-party monitoring systems
- Agion® antimicrobial and UV product protection<sup>1</sup> added to molded plastic façade



Universal ADC door bracket

<sup>1</sup> The Agion treated components do not protect users against food-borne bacteria. Continue to follow a prescribed schedule for cleaning.

Built for outstanding  
durability and serviceability

Follett Performance Plus refrigerators and freezers are more than just high-performance—they are also built-to-last and easy-to-service.

- Stainless steel interior and exterior provide exceptional durability and easy cleaning
- Dished floor allows for easy cleaning
- Back wall evaporator maximizes storage capacity
- Front ventilation eliminates the need for back, top or side clearance
- CFC-free foam insulation is durable and eco-friendly
- Heavy-duty edge-mount hinges ensure long life
- Magnetic gasket with self-closing hinges ensures secure closure
- Field reversible door with integral handle provides ease-of-use
- Nylon-padded leveling feet protect floors
  - ▶ Optional casters provide easy moving for cleaning behind the unit
- Stacking kits allow maximization of floor space utilization
- Front serviceability provides easy access
- Hospital grade plug and cord provides safety and durability

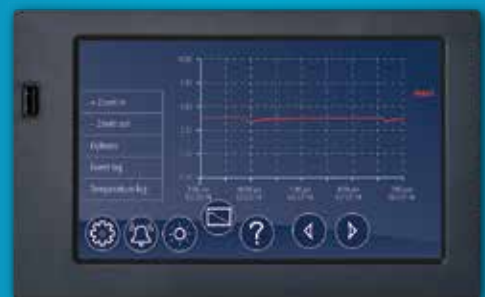
## Unmatched service and support program

- Outstanding warranty
  - ▶ 2-year parts and labor on refrigeration system
  - ▶ 5-year parts on compressor
- Factory-direct parts
- Local service seminars available throughout the U.S. and Canada at no charge
- Online training modules available
- 7-day technical support

Optional 7" full-color capacitive LCD touchscreen provides direct access and control to key settings



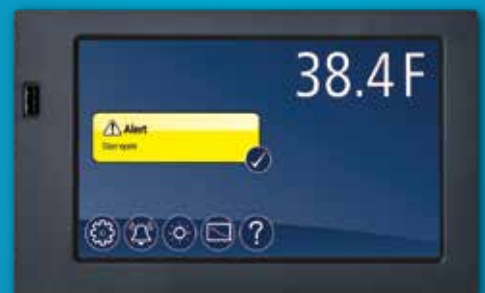
Quick access to control settings



## Constant temperature monitoring



Event and data logging with easy downloading via convenient USB port



On-screen alarm and event notification.  
Additional capabilities with battery back-up,  
including power loss and door open alerts.



# Engineered for superior temperature performance

Follett Performance Plus refrigerators and freezers are designed specifically to meet the temperature performance and heavy use requirements of hospitals and other healthcare facilities.

- Heavy-duty compressor and forced air cooling provide temperature consistency and quick recovery after door openings
  - ▶ Cabinet-wide temperature remains within  $\pm 1$  C (1.8 F), even with frequent door openings
  - ▶ Fan shuts off during door openings to maintain stable temperatures
  - ▶ Programmed automatic defrost maintains in-range product temperatures
- Custom-designed digital LED or capacitive touch LCD microprocessor temperature controls display product or air temperature in user-selectable C or F
- Blood bank and plasma models meet AABB, ARC and FDA standards

## Features designed with you in mind

Performance Plus always provides superior temperature accuracy and convenience, but our cabinet features are available in a range of configurations—so you can decide exactly what suits you best.

- Available in 4 and 5 cubic foot models
  - ▶ Can be placed below standard 36" or 34" ADA-compatible counters
  - ▶ Can also be used stacked or free-standing
- Flexible internal storage configuration
  - ▶ Two epoxy-coated wire shelves come standard (two stainless steel drawers on blood bank/plasma)
  - ▶ Extra drawers/shelves available as accessories
  - ▶ Drawers and shelves are interchangeable and can be used in combination
  - ▶ Lighted cabinet standard with touchscreen control package (not available with LED control units)
- Glass door available as an option on all refrigerator models
- Quiet compressor allows use in noise-sensitive areas



## Features and specifications

(S = Standard; O = Option; A = Accessory)

| Feature   | REF4P/5P | REF4P/5P-T | FZR4P/5P | FZR4P/5P-T | REF5BBP-T | FZR5PLP-T |
|---|----------|------------|----------|------------|-----------|-----------|
| 7" LCD touchscreen control package                    | -        | S          | -        | S          | S         | S         |
| Stainless steel construction on interior and exterior | S        | S          | S        | S          | S         | S         |
| Top-mounted controls                                  | S        | S          | S        | S          | S         | S         |
| User-selectable product or air temperature display    | S        | S          | S        | S          | S         | S         |
| High/low temperature alarms                           | S        | S          | S        | S          | S         | S         |
| Adjustable epoxy-coated wire shelves (2)              | S        | S          | S        | S          | -         | -         |
| Stainless steel drawers (2)                           | O        | O          | O        | O          | S         | S         |
| Dry contacts  | A        | S          | A        | S          | S         | S         |
| Magnetic gasket, self-closing door                    | S        | S          | S        | S          | S         | S         |
| User-selectable temperature display unit C or F       | S        | S          | S        | S          | S         | S         |
| Keypad  | O        | O          | O        | O          | O         | O         |
| Battery back-up on alarming and data logging          | -        | S          | -        | S          | S         | S         |
| Power loss and door open alarms                       | -        | S          | -        | S          | S         | S         |
| Temperature monitoring (chart recorder)               | A        | A          | A        | A          | S         | S         |
| Integral data logging and event recording             | -        | S          | -        | S          | S         | S         |

| Specification  | REF4P     | REF5P     | FZR4P     | FZR5P     | REF5BBP-T | FZR5PLP-T |
|--|-----------|-----------|-----------|-----------|-----------|-----------|
| Nominal capacity ft <sup>3</sup> (L)                     | 3.9 (110) | 4.5 (127) | 3.9 (110) | 4.5 (127) | 4.5 (127) | 4.5 (127) |
| Maximum number 450 ml blood bags/<br>300 ml plasma packs | n/a       | n/a       | n/a       | n/a       | 60        | 40        |
| Ventilation clearance requirements                       | 0"        | 0"        | 0"        | 0"        | 0"        | 0"        |
| Interior width   | 19.75"    | 19.75"    | 19.75"    | 19.75"    | 19.75"    | 19.75"    |
| Interior height  | 18.94"    | 21.54"    | 18.94"    | 21.54"    | 21.54"    | 21.54"    |
| Interior depth   | 18.32"    | 18.32"    | 18.32"    | 18.32"    | 18.32"    | 18.32"    |
| Exterior width   | 23.75"    | 23.75"    | 23.75"    | 23.75"    | 23.75"    | 23.75"    |
| Exterior height  | 31.38"    | 34.00"    | 31.38"    | 34.00"    | 34.00"    | 34.00"    |
| Exterior cabinet depth                                   | 25.62"    | 25.62"    | 25.62"    | 25.62"    | 25.62"    | 25.62"    |
| Exterior depth with façade                               | 27.00"    | 27.00"    | 27.00"    | 27.00"    | 27.00"    | 27.00"    |

## Options and accessories

- Glass door (refrigerators only)
- Touchscreen control package
- Keypad and electronic lock
- Shelf
- Drawer
- External digital data logger
- Temperature surveillance module
- Universal automated medication dispensing system bracket
- Dry (NO and NC) contacts
- Glycerine
- Stacking kit
- Temperature alarm
- 17" pedestal
- Extra key
- Casters

## There's performance. And then there's Follett Performance Plus.

Only Follett Performance Plus offers the innovative technology and unparalleled convenience you want with the superior temperature accuracy you need. Discover the next level of control in medical-grade undercounter refrigeration with Follett Performance Plus.



Agion is a registered trademark of Sciessent, LLC.  
Follett is a registered trademark of Follett LLC, registered in the U.S.  
Follett reserves the right to change specifications at any time without obligation.



801 Church Lane | Easton, PA 18040, USA  
+1 610.252.7301 | 800.523.9361 | folletthealthcare.com



Form #6500  
© Follett LLC | 02/18