



7 Series Sparkling water and ice dispenser with Chewblet® ice

freestanding

Features

Compact footprint, only 14.62" (37.1 cm) W x 22.12" (56.2) D

7 lb (3.2 kg) ice storage capacity

Integral air-cooled ice machine with up to 125 lb (56.7 kg) daily production of popular Chewblet ice

- designed to serve up to 25 people (140 servings per 10 hr day¹)
- soft, chewable, compressed nugget ice
- meets the Consortium for Energy Efficiency (CEE) Tier 2 specifications for highly efficient ice machines

Chilled sparkling and still water

- 4 gph (15 lph) of water cooling capacity
- sparkling water characterized by small, dense bubbles similar to fine European bottled sparkling waters
- food grade CO₂ required for installation and operation

NOTE: Follett does not sell or distribute CO₂.

Durable, attractive dispenser

- modern styling, stainless steel exterior with accent trim
- dispense-activated soft blue light illuminates point-of-use
- separate dispense buttons for ice, sparkling water, and chilled still water
- easy-to-clean, removable 20 oz (591 ml) drip tray

Designed with sanitation in mind

- Agion® silver-based antimicrobial product protection of key ice and water contact components²
- capacitive touch eliminates direct contact with ice

Installation

- professional installation recommended
- drainless design allows dispenser to be placed anywhere a water line can be run and eliminates the cost of a drain installation

Warranty

- 2 years parts and labor, 5 years compressor parts

Accessories

- 6.00" (15.24 cm) leg kit (item# 00956318)
- Drip tray drain kit (item# 00956375)
- Two-stage 0.5 micron carbon water filter system (item# 00130229)

NOTE: For use in applications with greater than 80 mg/l but less than 400 mg/l total dissolved solids in water and less than 200 mg/l hardness.

Not recommended for use with softened water.

Model configuration		
Ice storage capacity	Configuration	Item number
7 lb (3.2 kg)	freestanding	7FS100A-IW-NF-ST-CC

Job _____
Item _____

801 Church Lane | Easton, PA 18040, USA
1.800.523.9361 | 1.610.252.7301 | follettice.com

FOLLETT®

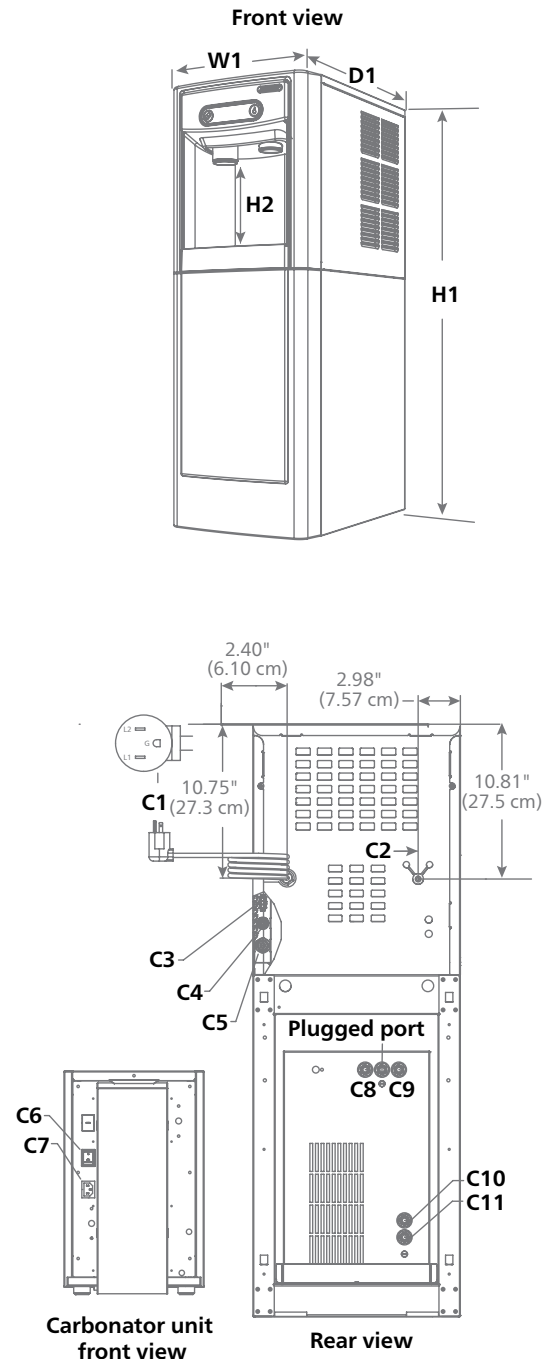
Specification

Ice storage capacity	7 lb (3.2 kg)
W1 Width of dispenser	14.62" (37.1 cm)
D1 Depth of dispenser	22.12" (56.2 cm)
H1 Height of dispenser	42.00" (106.7 cm)
H2 Dispense height clearance	8.50" (21.59 cm)
Ventilation clearance	3.00" (7.62 cm) on each side
C1 115 V/60/1 electrical	6.5 amps. Connect to dedicated 15 amp circuit, GFCI, fuse or breaker. 8' (2.4 m) cord w/ NEMA 5-15 90° plug.
C2 Ice machine water inlet	1/4" OD
Internal connections from dispenser, 6' carbonator unit power cord and water lines	C3 power port to carbonator unit C4 sparkling water inlet, 1/4" OD C5 still water inlet, 3/8" OD
C6 Carbonator unit power switch	C7 power port from dispenser
Carbonator unit water outlet ports	C8 chilled sparkling water out, 1/4" OD C9 chilled still water out, 1/4" OD
Carbonator unit inlet ports	C10 water inlet, 1/4" OD C11 CO ₂ inlet, 1/4" OD
Air temperature	50 - 100 F (10 - 38 C)
Water temperature	40 - 90 F (4 - 32 C)
Water pressure	10 - 70 psi (69 - 482 kpa)
Water flow rate	minimum incoming water flow rate 0.924 gpm (3.5 lpm)
Ice production at 70 F (21 C) air, 50 F (10 C) water	125 lb (56.7 kg)
Ice production at 90 F (32 C) air, 70 F (21 C) water	100 lb (45.4 kg)
Water cooling capacity	4 gph (15 lph)
Energy consumption for ice machine 90 F (32 C) air, 70 F (21 C) water	6.9 kWh per 100 lb (45.4 kg) ice
Energy consumption for carbonator unit	0.028 kWh, 77 F air, 68 F water, 3 lph
Total heat rejection	2150 BTU/hr
Water consumption	12 gal (45.4 L) of potable water per 100 lb (45.4 kg) of ice
Approximate net weight	151 lb (69 kg)
Approximate shipping weight	185 lb (84 kg)

NOTE: Intended for commercial use only. Follett can't guarantee freight carriers ability to deliver to residential locations. Follett service providers may not be bonded to perform on-site warranty repairs in certain areas.

SHORT FORM SPECIFICATION: Ice, chilled still water, and sparkling water dispenser to be Follett® automatic load in freestanding configuration, with 7 lb (3.2 kg) of ice storage and 0.26 gal (1 L) of sparkling water storage. Environmentally responsible R134a ice machine and chiller/carbonator unit to be air-cooled. Ice machine to produce approximately 125 lb (56.7 kg) of Chewblet compressed nugget ice, and 96 gal (363.4 L) of chilled sparkling or chilled still water per day at air temperature of 70 F (21 C) and water temperature of 50 F (10 C). Ice machine to be equipped with printed circuit board and diagnostics to allow simplified servicing and with capacitive touch user interface. Storage area to be insulated with non-CFC, high density foam-in-place polyurethane. 8' (2.4 m) cord and NEMA 5-15 90° plug provided 115 V/60/1. NSF and ETL listed. For use in applications with greater than 80 mg/l but less than 400 mg/l total dissolved solids in water and less than 200 mg/l hardness.

Dimensional drawing



¹ 16 oz (473 ml) cups, 2/3 full of ice.

² Disclaimer: Antimicrobial protection is limited to the treated components and does not treat water or ice. Agion is a registered trademark of Sciencell LLC.

Chewblet and Follett are registered trademarks of Follett LLC, registered in the US. Follett reserves the right to change specifications at any time without obligation. Certifications may vary depending on country of origin.

7 Series Sparkling freestanding